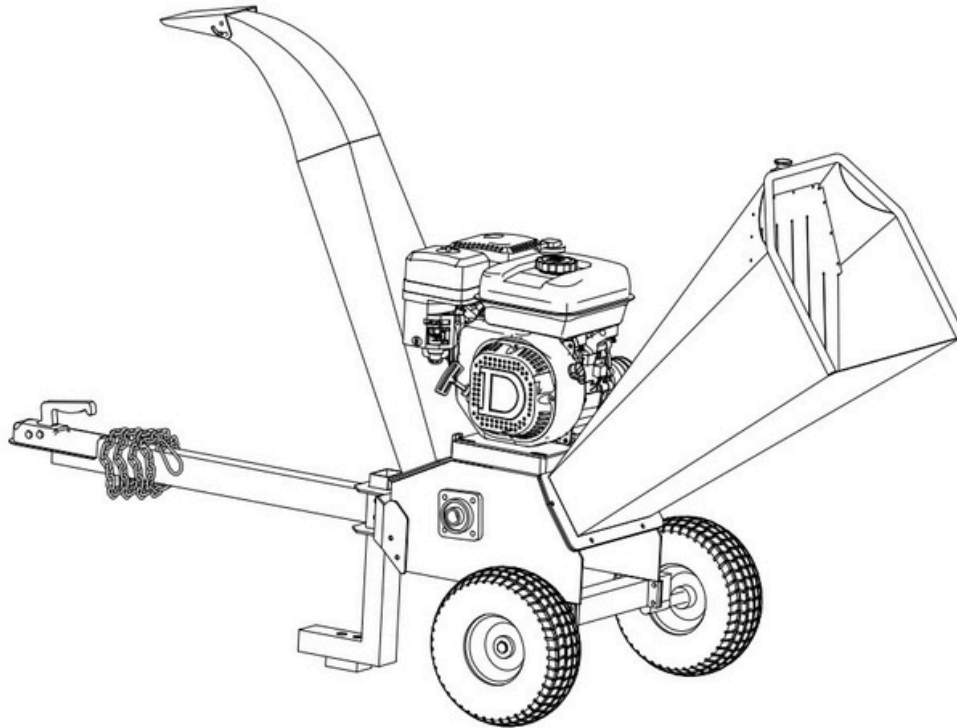




**HAHN A SYN s.r.o.**  
Lelkova 186/4  
747 21 Kravaře  
CZECH REPUBLIC  
info@hahn-profi.cz

**Hahn & Sohn GmbH**  
Janahof 53  
93413 Cham  
Deutschland  
hahn@hahn-sohn.de



# Wood Chipper Cedrus

## User's Manual

Model number: **CEDRB03**

Serial number:

Both the model number and the serial number can be found on the main label. Keep both numbers and store them in a safe place for future use.

## FOR YOUR OWN SAFETY

READ AND UNDERSTAND  
THE ENTIRE MANUAL BEFORE USING THE MACHINE.



---

## Table of contents

|   |    |
|---|----|
| PART I: General safety rules .....          | 2  |
| Part II: Presentation of the machine.....   | 7  |
| Part III: Operation.....                    | 8  |
| PART IV: Maintenance .....                  | 10 |
| Part V: Troubleshooting and parts list..... | 12 |

### Symbols used in this manual



#### **WARNING**

Signals a dangerous situation that can lead to serious injury or even death.

---



#### **CAUTION**

Signals a dangerous situation that can lead to minor or moderate injuries.

---



#### **NOTICE**

This type of information is important for proper operation of the machine. Failure to follow these instructions may lead to damage to the machine or damage to property.

---

### Additional information and possible changes

We reserve the right to discontinue products and to make changes and improvements to them at any time without notice and without any obligation to the purchaser. The descriptions and specifications contained in this manual were current at the time of printing. The accessories described in this manual may be optional. Not all illustrations necessarily apply to the machine purchased.

## Part I: General safety rules


### Safety labels on the machine

**⚠ OSTRZEŻENIE**

Do podajnika rozdrabniacza nie wolno wkładać drewna lub gałęzi o średnicy powyżej 120 mm, nie zastosowanie się do tego może skutkować zaklinowaniem się ostrzy rozdrabniających.

120mm

- Przeczytać Instrukcję Obsługi przed uruchomieniem urządzenia.
- Wszystkie osłony i zabezpieczenia muszą być w dobrym stanie i znajdować się na swoim miejscu.
- Podczas pracy należy trzymać ręce, stopy, twarz, ubranie i włosy z dala od podajnika oraz otworu wylotowego rozdrabniacza. Obracające się ostrza rozdrabniające mogą spowodować poważne obrażenia ciała w przypadku kontaktu z nimi. Obrabiany materiał może objąć się w podajniku lub zostać wyrzucony przez rurę wyrzutu. Luźne ubrania oraz długie włosy mogą zostać wciągnięte przez maszynę.
- Jeżeli rozdrabniacz zablokuje się, należy natychmiast wyłączyć silnik i poczekać, aż wszystkie ruchome części zatrzymają się przed usunięciem zakleszczonego materiału.
- Jeżeli silnik zgaśnie z powodu zablokowania urządzenia, przed przystąpieniem do usunięcia zakleszczonego materiału należy ustawić dźwignię gazu do położenia zatrzymania lub przestawić wyłącznik zapłonu do położenia "0", jeśli jest na wyposażeniu.
- Nie należy przeprowadzać czynności regulacyjnych lub serwisowych podczas pracy silnika.
- Nie należy pracować na nierównym terenie, gdzie urządzenie jest niestabilne.
- Aby uniknąć zagrożenia pożarem, należy trzymać liście, trawę i inne łatwopalne materiały z dala od gorącego silnika i tłumika.
- Trzymać dzieci i osoby postronne z dala od miejsca pracy.
- Do pracy używać odpowiednich okularów ochronnych, rękawic i nauszników.
- Praca na twardych powierzchniach może powodować zagrożenie odbicia się obrobionego materiału i spowodowania obrażenia.





---

## WARNING

Before operating the shredder, read these safety and operating instructions. Be sure to read the operation and service recommendations to ensure the best possible performance of the machine.

---

## Purpose

---

### NOTICE

The machine is designed exclusively for shredding wood and must not be used for other purposes.

Only trained operators who have read the contents of this manual may operate it.

Assembling and using parts other than those purchased from the dealer may create hazards.

The company assumes no responsibility for the consequences of using the machine in this way. In addition, this voids the warranty.

---

## Before use

---

### CAUTION

- A. The operator must receive full training before operating the machine.
  - B. Be sure to read the operating instructions carefully.
  - C. The machine with all guards installed should be placed on a level ground. The guards must be in good condition.
  - D. Make sure the blades are in good condition and well fixed. All blades must be sharpened; replace the whole set if dulled.
  - E. Check the correctness of all fixings.
  - F. Only TREE without nails etc. can be put into the machine.
  - G. A fire extinguisher must be available at the workplace.
- 

## During operation

---

### CAUTION

- A. Always feed the material from the side.
  - B. It is a good idea to have another trained operator nearby.
  - C. Ensure strict employee discipline and service the machine according to the schedule.
  - D. Pay attention to the direction of ejection and, in certain situations, the direction of the wind to avoid throwing residue onto the road or toward bystanders.
  - E. DO NOT place any body part in the feeder while the machine is running.
-

- F. The machine MUST NOT be operated by operators under the influence of alcohol or intoxicants.
  - G. DO NOT operate the machine in buildings or enclosed spaces or stand on the feeder.
- 

## Protection of the operator and bystanders

---



### WARNING

The shredder is a high-powered machine with moving parts that generate a lot of energy. When operating the machine, care must be taken. Operation without precautions involves numerous risks to the operator and bystanders. When operating the machine, always:

- A. remember that the operator or user is responsible for accidents and hazards to other people, property and himself;
  - wear goggles or safety glasses with side shields to protect eyes from ejected debris;
  - avoid jewelry and loose clothing that could be caught in moving parts;
- B. wear protective gloves. Use gloves of the correct size, without loose cuffs or drawstrings;
- C. wear footwear with non-slip soles. If possible, use protective footwear. Do not operate the machine barefoot or in sandals;
- D. wear long pants;
- E. ensure that bystanders are at least 10 meters away from the work area; turn off the engine when another person or animal approaches the machine.

F.  
G.

---

## Safety of children and animals

---



### WARNING

If the operator does not exercise due caution due to the presence of children and animals, a tragic accident can occur. Children are often interested in the machine and shredding. Never assume that children will stay where they were last seen. The following precautions should always be observed:

- A. ensure that children and animals are at least 10 meters away from the work area under the supervision of a responsible adult;
  - B. be vigilant and turn off the machine as soon as children or animals enter the work area;
  - C. never allow children to operate the shredder.
- 

## Safe operation of machinery

---



### WARNING

Gasoline is a flammable liquid. Gasoline is also a source of flammable vapors that can easily cause a fire or explosion. Never underestimate the dangers of gasoline.

---

The following precautions should always be observed:

- A. never run the engine in confined spaces or poorly ventilated areas, as exhaust fumes contain carbon monoxide, an odorless, tasteless and deadly poisonous gas;
- B. store fuel and oil in designated, approved containers away from heat sources and open flames, and out of the reach of children;
- C. replace rubber hoses and sealing rings when worn or damaged and every five years of use;
- D. refill fuel with the engine off after it has completely cooled down. Keep fuel away from lit cigarettes and any objects that could ignite or explode. After filling the tank, keep the filler cap and container cap tightly closed;
- E. in the event of a fuel spill, do not start the engine. Move the machine away from the spilled fuel and do not place the machine near potential fire sources until the fumes have dissipated. Wipe up spilled fuel to prevent fire and dispose of it properly;
- F. wait until the engine has completely cooled down before placing the machine in an enclosed area. Never store the machine with fuel in the tank or fuel containers near open flames or sources of sparks, such as boilers, heaters, clothes dryers or stoves;
- G. never make adjustments or repairs with the engine running. Before making any adjustment or repair, turn off the engine, disconnect the ignition cable and place it away from the spark plug to prevent accidental starting of the machine, and wait 5 minutes;
- H. never change the settings of the engine speed controller. The regulator decides the maximum safe speed and protects the engine. Excessive engine speed is dangerous and leads to damage to the engine and other moving parts of the machine. If necessary, contact an authorized dealer to change the regulator settings;
- I. keep flammable substances away from a hot engine;
- J. never cover the machine until the engine has cooled down;
- K. do not start the engine with the air filter or carburetor air intake cover removed. Removal of these parts may create a fire hazard. Do not use flammable liquids to clean the air filter;
- L. the muffler and engine get very hot and can cause burns, so do not touch them.

---

## General safety rules



### WARNING

To prevent or minimize the risk of death or serious injury, it is essential to operate the shredder safely. Failure to follow safety precautions can create numerous hazards for the operator.

---

#### Part I: General safety rules

Always observe the following precautions when operating the machine:

- A. Petrol shredder is a high-powered machine, not a toy. Extreme caution should be exercised at all times. The machine is designed for shredding wood. It should not be used for any other purpose;
- B. the operator must know how to turn off the machine quickly;
- C. never run the machine on a slippery, wet, muddy or icy surface. Use caution to avoid slipping or falling;
- D. refer to the manufacturer's instructions, where proper operation and installation of accessories are described;
- E. never use the machine without all guards installed;
- F. do not under any circumstances disassemble, bend, cut off, move, weld or otherwise modify standard parts of the shredder. This also applies to all guards. Modifications to the machine may lead to personal injury and damage to property, and will void the warranty;
- G. if the machine starts making unusual noises or vibrating, turn off the engine, disconnect the ignition cable and lay it away from the spark plug to prevent accidental starting, then wait 3 minutes for the engine to cool down, and inspect the machine for damage. Vibration is generally a symptom of failure. Check parts for damage and clean, repair and /or replace as necessary;
- H. never change the safety settings. Check their correct operation regularly;
- I. before performing any maintenance or inspection, turn off the engine, disconnect the ignition cable and lay it away from the spark plug to prevent accidental starting, then wait 3 minutes for the engine to cool down;
- J. never allow anyone unfamiliar with this manual to operate the shredder. Only responsible persons familiar with safe operation should operate the machine;
- K. never place too much material in the feeder or shred wood that does not comply with the manufacturer's recommendations. This may lead to personal injury or damage to the machine;
- L. when operating the machine, do not rush or take anything for granted. If in doubt about the equipment or the environment, turn off the machine and check everything;
- M. never operate the machine while under the influence of alcohol or intoxicants;
- N. use the machine only in daylight;
- O. beware of hidden hazards and traffic;
- P. ensure that all nuts and bolts are tightened and that the machine is in good condition.

---

## Information for all users

The list of warnings is never complete. In case of situations not described in this manual, the operator should use common sense and operate the shredder in a safe manner. You can also ask your local dealer for help.

---

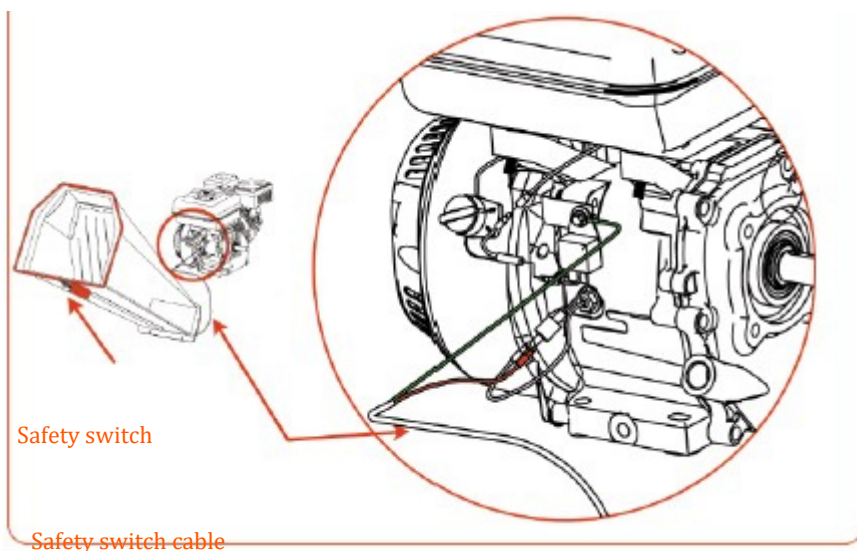




## WARNING: SAFETY SWITCH

Part I & II

Make sure the safety switch wire is properly connected. If the circuit breaker does not work properly, death or serious injury may result.



## Part II: Presentation of the machine

It is worthwhile to thoroughly familiarize yourself with the controls and functions of a diesel shredder. If you have any questions, please contact your local dealer.

## TECHNICAL SPECIFICATIONS

|                   | Mechanical starter 13                              | Electric starter 13 KM/10                            |
|-------------------|--|--|
| Engine            | KM/10 KM, four-stroke                              | KM, four-stroke Gasoline                             |
| Fuel              | Gasoline 1 m <sup>3</sup> /h - 1 m <sup>3</sup> /h | 1 m <sup>3</sup> /h - 1 m <sup>3</sup> /h 120 mm 310 |
| Efficiency        | 120 mm 310 mm Double-                              | mm   |
| Branch diameter   | sided 160-180 180-180 180-180                      |  |
| Max. branch width | 1460 mm 1850 mm 800 mm                             |  |
| Cutting blades    | 200 kg 2000  | Double-sided   |
| Tire              |  | 160-180 180-180 180-180                              |
| Height            |  | 1460 mm  |
| Length            |  | 1850 mm  |
| Width             |  | 800 mm   |
| Weight            |  | 210 kg   |
| Max. speed        |  | 2000   |



## Part III: Operation

---

Before proceeding with the activities described in this chapter, it is a good idea to familiarize yourself with the shredder.

---

### WARNING

- A. Before operating the shredder, read all instructions, precautions and /or warnings in PART I: General Safety Instructions. If you have any doubts or questions about the proper or safe way to perform the operations described in this manual, contact your local dealer.
  - B. When operating the shredder, stand in the safe work area (OPERATOR'S ZONE). Remain in the safe work area at all times when the actuator is moving (extending or retracting). Never place any part of your body in an area where it would endanger safe operation.
  - C. Always wear personal protective equipment, including safety glasses, ear protection, close-fitting gloves without drawstrings or loose cuffs, and footwear with steel toe caps, before loading and operating the shredder.
  - D. Be familiar with proper and improper methods of shredding wood. Never use incorrect or unsafe methods.
- 

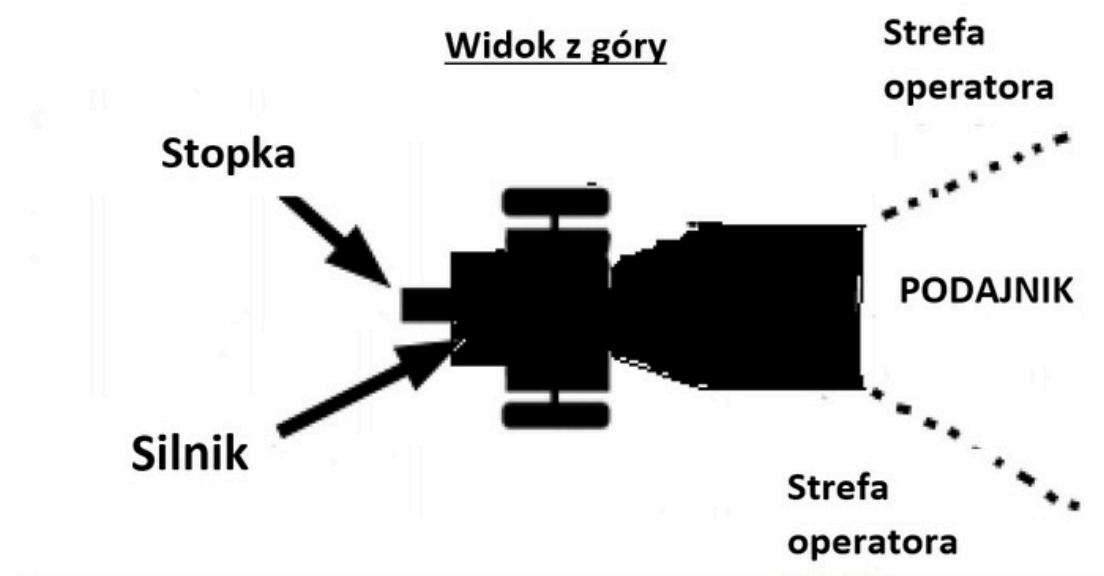
### Start-up

- 1. Set the shredder on a flat, dry surface, and make sure that the machine cannot move.
- 2. Make sure the fuel shut-off valve is in the "ON" position.
- 3. Place the suction lever in the "CHOKE" position (this is only necessary when the engine is cold).
- 4. Move the gas lever to the "FAST" position.
- 5. Mechanical starter: turn the ignition switch to the "ON" position. Grasp the mechanical starter and slowly pull it out until you feel resistance. Allow the cable to retract slightly, then pull it violently to start the engine. Usually 1-2 jerks are enough.
- 6. Electric starter: turn the key to the start position and hold it until the engine starts, then let it return to the running position.
- 7. When the engine starts to run evenly, slowly move the suction lever back to the "RUN" position (when starting a cold engine).
- 8. If the chopper has not been started before (the engine is cold), warm up the engine by running it for 3-5 minutes with the throttle partially open, and then move the accelerator lever to the maximum speed position.

## Stopping the machine

- 1 Place the gas lever in the "IDLE" position.
- 2 Mechanical starter: Turn the ignition switch to the "OFF" position.
- 3 Electric starter: Turn the key to the "OFF" position.

## Operator area



## Shredding of wood



### NOTICE

The diameter of the wood /branches should not exceed 120 mm.



### WARNING

When placing material in the machine, do not put your hand into the ejector. This is very dangerous and can lead to hand injury.

When operating the shredder, do not reach into or over the bar. This is very dangerous and can lead to personal injury or even death.

## Machine jamming

If the roller stops while shredding wood or branches, turn off the engine and remove the material that blocked the roller, then start the engine again and return to work.

## Part IV: Maintenance

---

---

Regular maintenance helps to ensure the best possible performance and durability of the machine. Maintenance procedures can be found in this document and in the engine manual.



### WARNING

Before performing any maintenance or inspection, turn off the engine and wait five minutes for all parts to cool down. Disconnect the ignition cable and place it away from the spark plug, and disconnect the battery terminals (in the case of an electric starter).

---

### Regular maintenance checklist

| Procedure  | Before each use           | Each 2 hours | Each 20 hours | Each 100 hours |
|--|---------------------------|--------------|---------------|----------------|
| Check the oil level in the engine                      | Δ                         |              |               |                |
| Check the general condition of the equipment           | Δ                         |              |               |                |
| Check sharpness of blades                              | Δ                         |              |               |                |
| Check belts  | Δ                         |              |               |                |
| Check tire pressure                                    |                           |              | Δ             |                |
| Clean the outside of the engine and the cooling system |                           |              | Δ             |                |
| Change the engine oil                                  | First time after 20 hours |              | Δ             |                |
| Replace the air filter                                 |                           |              | Δ             |                |
| Replace the spark plug                                 |                           |              |               | Δ              |

### Engine Service

For information on engine maintenance, refer to the engine manual.



## NOTICE

All shredder bearings have sealing rings, and the amount of grease should be sufficient for the entire period of normal operation of the machine.

---

### Lubrication of the gear mechanism



## NOTICE

The entire gear mechanism should be lubricated before each use.

---

## Part V: Troubleshooting and parts list

Most problems can be easily solved. The following table shows the most common problems and their solutions. If the problem cannot be solved, contact your local dealer.

### WARNING

Before performing any maintenance or inspection, turn off the engine and wait five minutes for all parts to cool down. Disconnect the ignition cable and place it away from the spark plug.

### Problem solving table

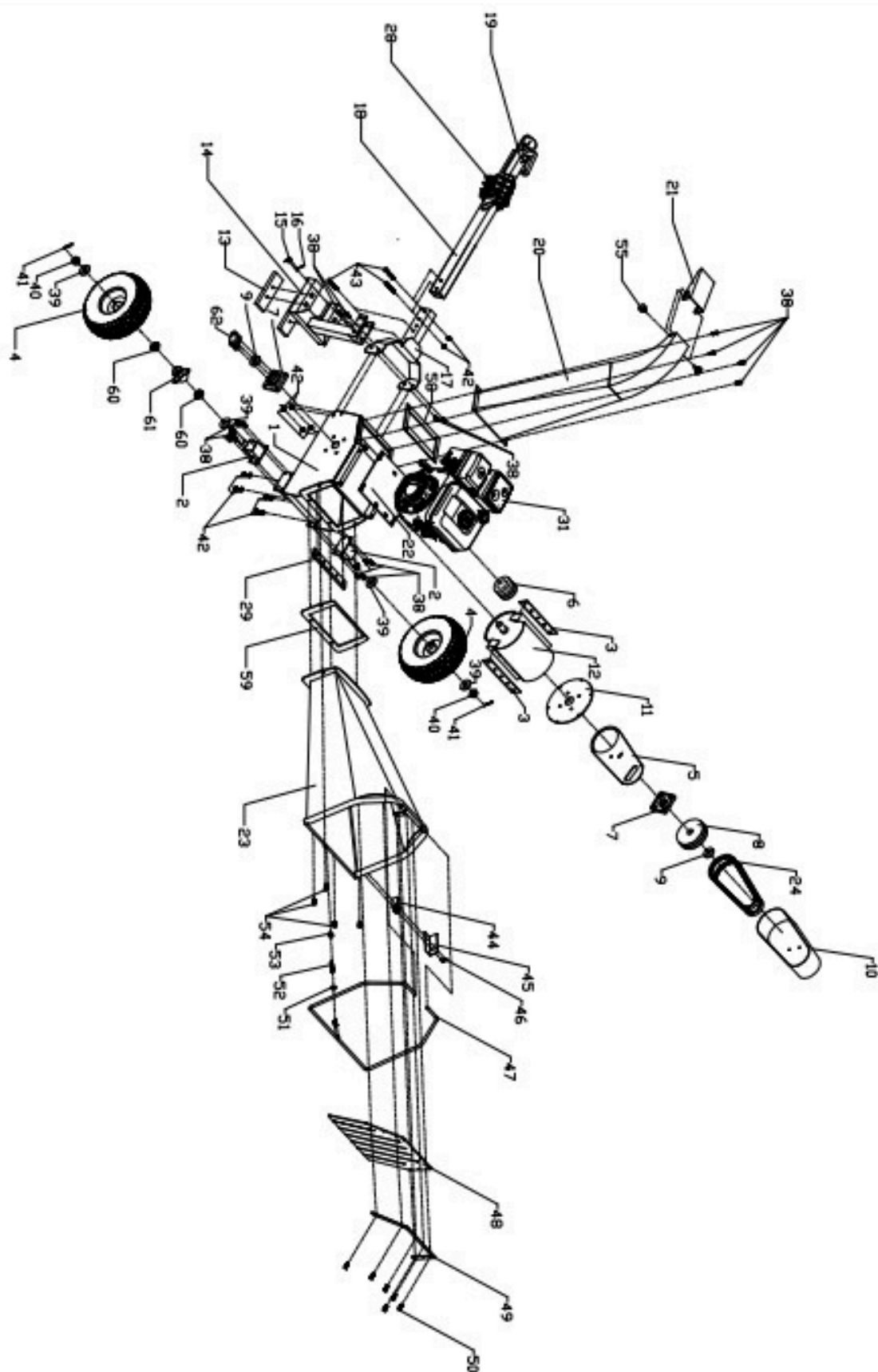
| OBJECT  | POSSIBLE CAUSE  |
|---|---|
| The machine does not start.<br><br>(Refer to the engine manual for engine procedures).                    | <ul style="list-style-type: none"> <li><input type="checkbox"/> Is the ignition switch in the "ON" position?</li> <li><input type="checkbox"/> Is the fuel shut-off valve open?</li> <li><input type="checkbox"/> Is the fuel used fresh and clean? Old fuel should be replaced. If the fuel is stored for more than 30 days, use a fuel stabilizer.</li> <li><input type="checkbox"/> Is the spark plug clean? If the spark plug is dirty or cracked, replace it. If the spark plug is dirty with oil, remove it, put a cloth to the spark plug hole and pull the starter cord a few times to remove the oil from the cylinder, then wipe the spark plug and put it in its place.</li> </ul>   |
| The engine loses power or does not run evenly.<br><br>(Refer to the engine manual for engine procedures). | <ul style="list-style-type: none"> <li><input type="checkbox"/> Check that the gas lever is in the "Run" position</li> <li><input type="checkbox"/> Is the air filter clean? If it is dirty, replace it according to the procedure described in the engine manufacturer's manual</li> <li><input type="checkbox"/> Is the spark plug clean? A dirty or cracked spark plug should be replaced. If the spark plug is dirty with oil, remove it, put a cloth to the spark plug hole and pull the starter cord a few times to remove the oil from the cylinder, and then wipe the spark plug and put it in its place</li> <li><input type="checkbox"/> Is fresh and clean unleaded fuel being used? Old fuel should be replaced. If the fuel is stored for more than 30 days, use a fuel stabilizer</li> <li><input type="checkbox"/> Is there enough clean oil in the engine? If the oil is dirty, it should be changed according to the procedure described in the engine manufacturer's manual.</li> </ul> |

---

Part V: Troubleshooting and parts list

|  |   |
|--|---|
|  | <input type="checkbox"/> Check the oil level and top it up if necessary. Check the oil  |
| The engine smokes<br>(Refer to the engine manual for engine procedures). | <input type="checkbox"/> level and top it up if necessary.<br><input type="checkbox"/> Check the air filter and clean or replace it if necessary.<br><input type="checkbox"/> It is possible that the oil is too light for the temperature.<br><input type="checkbox"/> Refer to the engine manual for details.<br>Clean contaminated cooling fins. |
| Low shredding power.   | <input type="checkbox"/> The belts are too loose, causing them to fall. Adjust or replace the belts.  |

## Exploded view





Part V: Troubleshooting and parts list

| Ref.No. | Description            | Ref.No. | Description               |
|---------|------------------------|---------|---------------------------|
| 1       | foundation             | 29      | Lower blade               |
| 2       | Wheel axis             | 31      | Engine                    |
| 3       | Blade                  | 38      | M10x24 hex bolt           |
| 4       | wheel                  | 39      | Φ20 washer                |
| 5       | Belt cover inner plate | 40      | M20 open nut              |
| 6       | clutch                 | 41      | Pin                       |
| 7       | bearing                | 42      | M10 lock nut              |
| 8       | pulley                 | 43      | M10x8 hex bolt            |
| 9       | 42x9x5 spacer          | 44      | Switch                    |
| 10      | Belt cover             | 45      | Switch cover              |
| 11      | Bearing fixation frame | 46      | M16x16 socket head screw  |
| 12      | roller                 | 47      | Switch frame              |
| 13      | Rubber pad             | 48      | Rubber of feeder          |
| 14      | Support feet           | 49      | Rubber fitting            |
| 15      | Bolt pin               | 50      | M16x16 hex bolt           |
| 16      | B-shape Pin            | 51      | Φ12 washer                |
| 17      | Feet fixation          | 52      | Φ16x8x1.5 spring          |
| 18      | tower                  | 53      | M12 nut                   |
| 19      | Tower hitch            | 54      | M8x12 hex bolt            |
| 20      | Discharge              | 55      | Discharge knob            |
| 21      | Chute adjust           | 58      | Discharge to frame rubber |
| 22      | Engine fixation        | 59      | Feed to frame rubber      |
| 23      | In-feed                | 60      | Bearing                   |
| 24      | Belt                   | 61      | Flange                    |
| 28      | chain                  | 62      | Bearing cover             |
|         |                        |         |                           |