

MASONRY&STONE SAW

CEDPK350

OPERATING INSTRUCTION



CONTENT

I . TECHNICAL SPECIFICATION	2
II . SAW FEATURES	2
III.GENERAL SAFETY INSTRUCTIONS	3
IV. REPLACEMENT PARTS LIST	5

WARNING

To reduce the risk of injury , all operators and maintenance personnel must read and understand these instructions before operating , changing accessories or performing maintenance on equipment we produced . All possible situations cannot be covered in these instructions. Care must be exercised by everyone using, maintaining or work near this equipment.



CAUTION



NO OIL IN ENGINE

Fill the engine with oil to the correct level before starting the engine.

ДВИГАТЕЛЬ ПОСТАВЛЯЕТСЯ БЕЗ МАСЛА

Перед запуском проверьте и заполните до требуемого уровня.

MOTOR SIN ACEITE

Agregue aceite al motor al nivel correcto antes de encenderlo.

MOTOR SEM ÓLEO

Adicione óleo ao nível correto antes de ligar o motor.

I . TECHNICAL SPECIFICATION

Item	Description
Motor	220V / 50 Hz
Power	2.2KW
Max. Rip Cut Length	700mm
Max. Cutting Depth	110mm
Work Table Size	430 x 535mm
Blade Diameter	355mm
Arbor Size	25.4mm
Weight	NW:80KG /GW: 93KG
Packing Size	1130x560x625mm

II . SAW FEATURES

- ◆ Robust reinforced steel structure ensuring max. rigidity and durability
- ◆ Industrial quality fully enclosed induction motor with direct drive mounting
- ◆ 31-1/2" cutting capacity for cutting large materials
- ◆ Swing head design features smooth and accurate bevel cutting
- ◆ Large working table for working stability and accuracy
- ◆ Automatic overload protection
- ◆ Four built-in legs are included
- ◆ Large capacity water pump is included as standard accessory



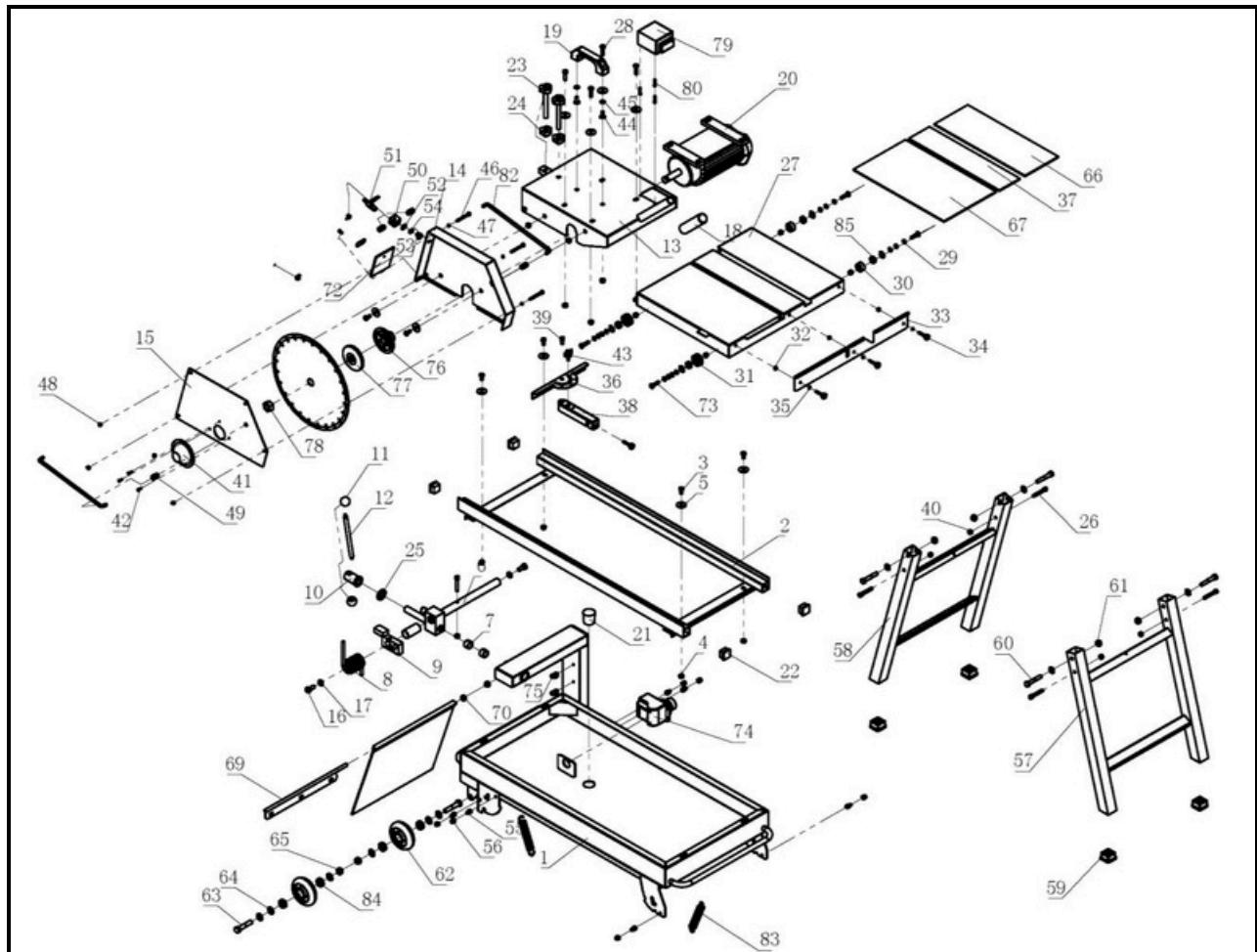
45°bevel cutting operation

III. GENERAL SAFETY INSTRUCTIONS

1. Maintain a safe working environment. Keep the work area well lit. Make sure there is adequate surrounding workspace. Always keep the work area free of obstructions, grease, oil, trash and other debris. Do not use the Masonry saw in areas near flammable chemicals, dusts, and vapors.
2. Maintain labels and nameplates on the Masonry saw. These carry important information.
3. Use the right product for the right job. There are certain applications for which this product was designed. Do not use small equipment, tools, or attachments to do the work of larger industrial equipment, tools, or attachments. Do not use this product for a purpose for which it was not intended.
4. This product must continuously run with cold water. Dry running will cause serious damage to the pump seals.
5. **CAUTION!** Keep hands and fingers away from cutting area and Saw Blade. Use an appropriate “push stick” (not included) when necessary.
6. Check Blade Guard for proper upward/downward movement before each use. Do not operate the Masonry Saw if the Blade Guard does not move freely. Never clamp or tie the Blade Guard into the upper position. If the Masonry Saw is accidentally dropped the Blade Guard may be bent. Raise the Blade Guard and make sure it moves freely and does not touch the Saw Blade or any other part of the Saw, in all angles and depths of cut.
7. Do not pull or carry the Masonry Saw by its Power Cord or pull the Cord around sharp corners or edges. Do not unplug the Masonry Saw by pulling on the Cord. Keep the Cord away from heated surfaces.
8. Keep all guards in place and in proper working order.
9. Do not handle the Power Switch with wet hands.
10. Make sure the Masonry Saw is mounted on a flat, level, sturdy work surface capable of supporting the weight of the Saw and workpieces.
11. Always use Continuous Rim, Diamond Saw Blades with a 14 inch diameter, 1 inch round arbor hole, and rated at 3,360 RPM or greater. Saw Blades that do not match the mounting hardware of the Masonry Saw or that are rated less than the required minimum RPM will run eccentrically causing loss of control or may fly off the Saw.
12. Do not use the Masonry Saw for cutting metals or for cutting curves. This may cause the Saw Blade to break and/or reduce its service life.
13. Make sure the Saw Blade is wet at all times when cutting.
14. Keep all electrical connections dry and off the ground.
15. Use cold water only. Never use hot water. Using hot water can damage the Pump seals.
16. Never run the Masonry Saw without a water supply. Running the unit without a water supply will cause irreparable damage to the Pump, Motor, or Blade.
17. Make sure the water supply used for the Masonry Saw is not dirty, sandy, and does not contain any corrosive chemical products. Always add fresh, clean water before using the unit.
18. Never leave the Masonry Saw unattended when it is plugged into an electrical outlet. Turn off the Masonry Saw, and unplug it from its electrical outlet after use.
19. Always keep the water level at the recommended level. Fill the Tank with enough water so that the Pump’s inlet is completely submerged, but not so much water that the Tank overflows.
20. Never splash water on the Motor, Power Switch, Power Cord, or any other electrical component. Make sure to stand on a dry, insulated surface such as a rubber mat while using the Masonry Saw.

21. Make sure to clean the Tank thoroughly after each use.
22. To avoid accidental injury, always wear heavy duty work gloves when changing the Saw Blade.
23. Before using the Masonry Saw, make sure the Saw Blade is properly mounted on the Saw Spindle. Make sure the Saw Blade is balanced, and is not cracked or bent.
24. The Saw Blade may become hot while cutting. Allow the Saw Blade to completely cool before handling.
25. Allow the Saw Blade to spin up to full speed before feeding a workpiece into it. When turning off the Masonry Saw, allow the Saw Blade to spin down and stop on its own. Do not press against the Saw Blade to stop it.
26. Do not force the workpiece into the Saw Blade when cutting. Apply moderate pressure, allowing the Saw Blade to cut without being forced.
27. Turn off the Masonry Saw and allow the Saw Blade to stop on its own if the Saw Blade is to be backed out of an uncompleted cut.
28. Never attempt to remove material stuck in the Masonry Saw while it is plugged in or running.
29. When cutting a large workpiece, make sure its entire length is properly supported.
30. Never stand on the Masonry Saw. Serious injury can result if the Masonry Saw is tipped or if the rotating Saw Blade is accidentally contacted.
31. For your safety: In extreme working conditions the Circuit Breaker will automatically switch off the Motor to prevent overheating. In this event, turn the Power Switch to its "OFF" position. Wait five minutes or until the Motor has cooled. Depress the Circuit Breaker. Then, turn the Power Switch to its "ON" position to resume cutting. If the Circuit Breaker continues to trip, have the tool serviced by a qualified technician.
32. NEVER attempt to disable the Circuit Breaker.
33. Always turn off the Masonry Saw, unplug it from its electrical outlet, and allow it to stop before changing accessories or performing any inspection, maintenance, or cleaning procedures.
34. WARNING! Some dust created by power sanding, sawing, grinding, drilling, and other construction activities, contain chemicals known (to the State of California) to cause cancer, birth defects or other reproductive harm. Some examples of these chemicals are: lead from lead-based paints, crystalline silica from bricks and cement and other masonry products, arsenic and chromium from chemically treated lumber. Your risk from these exposures varies, depending on how often you do this type of work. To reduce your exposure to these chemicals: work in well ventilated areas, and work with approved safety equipment such as those dust masks that are specially designed to filter out microscopic particles.
35. People with pacemakers should consult their physician(s) before using this product. Operation of electrical equipment in close proximity to a heart pacemaker could cause interference or failure of the pacemaker.

IV. REPLACEMENT PARTS LIST



PART NO.	DESCRIPTION	QTY
1	Base Assy.	1
2	Rail Assy.	1
3	Hexagon Bolt M8×16	6
4	Lock Nut M8	11
5	Washer φ8×30	10
6	Motor Assy. Fastener 1	1
7	Bearing Bush	1
8	Spring	1
9	Motor Assy. Fastener 2	1
10	Motor Assy. Locker 2	1
11	Ball Nut	2

PART NO.	DESCRIPTION	QTY
12	Motor Assy. Fastener 1	1
13	Motor Support	1
14	Blade Cover, Part 2.	1
15	Blade Cover, Part 1.	1
16	Bolt M10	2
17	Spring Washer $\phi 12$	2
18	Rubber Grip	1
19	Handle	1
20	Electric Motor	1
21	Water Drain Plug	1
22	Plastic Plug	4
23	Grip Knob M12 \times 110	2
24	Grip Knob Nut M12	2
25	Washer $\phi 20 \times 39$	1
26	Hex Socket Nut M8 \times 50	5
27	Table	1
28	Hexagon Bolt M8 \times 30	4
29	Washer $\phi 8 \times 24$	14
30	Rail Wheel 1	2
31	Rail Wheel 2	2
32	Lock Nut M6	7
33	Material Stop	1
34	Grip Knob M6 \times 30	4
35	Washer	6
36	Cutting Gauge	1
37	Rubber Mat 2	1
38	Guide	1
39	Hex Socket Nut M6 \times 16	1
40	Lock Nut M8	5

PART NO.	DESCRIPTION	QTY
41	Shaft Cover Rivet M4	1
42	Bolt Flat Cross Screw	4
43	M8×16 Washer φ8×16	1
44	Hexagon Bolt M6×55	2
45	Spring Washer φ6 Nut	2
46	M6 Water Dispenser T-	3
47	jointer Water Tap	3
48	Washer φ10×22	4
49	Hexagon Bolt M10×10	4
50	Spring Washer φ10 Hex	1
51	Socket Nut M8×10 Nut	1
52	M8 Leg, front Leg, rear	5
53	Plastic Socket Half	1
54	Thread Bolt M10×60	1
55	Lock Nut M10 Wheel	6
56	Half Thread Bolt	6
57	M12×60 Washer φ12×25	1
58	Lock Nut M12 Rubber	1
59	Mat 1 Rubber Mat 3	4
60	Splash Guard 1 Splash	4
61	Guard Holder	4
62		2
63		2
64		6
65		2
66		1
67		1
68		1
69		1

PART NO.	DESCRIPTION	QTY
70	Nut M10	2
71	Splash Guard 2	1
72	Washer	1
73	Hexagon Bolt M8×30	4
74	Water Pump	1
75	Water Pipe Clamp	2
76	Flange, inner	1
77	Flange, outer	1
78	Nut M20	1
79	Switch	1
80	Pan Head Cross Screw M4	3
81	Water Pipe 1	2
82	Water Pipe 2	1
83	Spring 2	2
84	Bearing 6001ZZ	4
85	Bearing 608Z	4

