



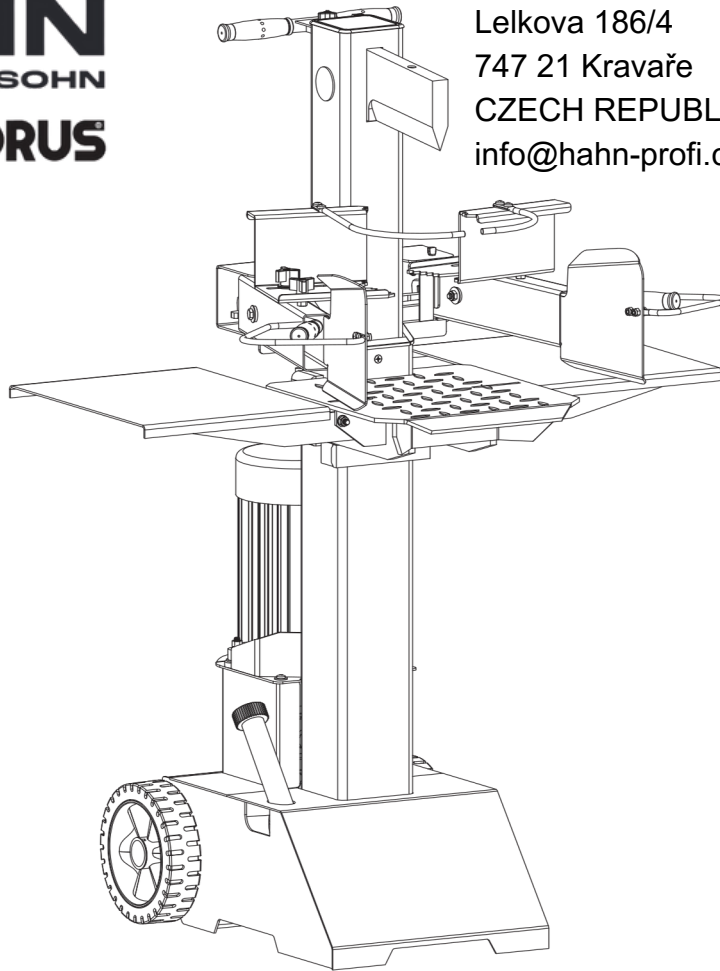
SAVE THIS MANUAL FOR FUTURE REFERENCE

ORIGINAL INSTRUCTION

HAHN
& SOHN
CEDRUS

HAHN A SYN s.r.o.
Lelkova 186/4
747 21 Kravaře
CZECH REPUBLIC
info@hahn-profi.cz

Hahn & Sohn GmbH
Janahof 53
93413 Cham
Deutschland
hahn@hahn-sohn.de



HYDRAULIC LOG SPLITTER

OPERATOR'S MANUAL

MODEL NUMBER : ☐ CEDLS07V

SERIAL NUMBER: _____

**BOTH MODEL NUMBER AND SERIAL NUMBER MAY BE FOUND ON THE MAIN LABEL.
YOU SHOULD RECORD BOTH OF THEM IN A SAFE PLACE FOR FUTURE USE.**

FOR YOUR SAFETY

**READ AND UNDERSTAND THE ENTIRE MANUAL BEFORE OPERATING
MACHINE**

TABLE OF CONTENTS

INTRODUCTION

SYMBOLS

SAFETY

SAFETY WARNINGS & INSTRUCTIONS

SPECIAL WARNINGS & INSTRUCTIONS

SPECIFICATIONS

UNPACKING

CONTENTS SUPPLIED

ASSEMBLY

KNOW YOUR MACHINE

TRANSPORT

DELIVERING LOG SPLITTER TO WORK SITE

SPLITTER OPERATION

REPLACING HYDRAULIC OIL

SHARPENING WEDGE

TROUBLE SHOOTING

WIRING DIAGRAM

HYDRAULIC SYSTEM DIAGRAM

PARTS SCHEMATIC

INTRODUCTION

YOUR NEW LOG SPLITTER WILL MORE THAN SATISFY YOUR EXPECTATIONS. IT HAS BEEN MANUFACTURED UNDER STRINGENT QUALITY STANDARDS TO MEET SUPERIOR PERFORMANCE CRITERIA. YOU WILL FIND YOUR NEW UNIT EASY AND SAFE TO OPERATE, AND WITH PROPER CARE, IT WILL GIVE YOU MANY YEARS OF DEPENDABLE SERVICE. **READ THE OPERATOR'S MANUAL BEFORE USING YOUR NEW LOG SPLITTER. TAKE SPECIAL CARE TO HEED THE CAUTIONS AND WARNINGS.**



ENVIRONMENTAL



RECYCLE UNWANTED MATERIALS INSTEAD OF DISPOSING OF THEM AS WASTE. ALL TOOLS, HOSES AND PACKAGING SHOULD BE RESORTED, TAKEN TO THE LOCAL RECYCLING CENTER AND DISPOSED OF IN AN ENVIRONMENTALLY SAFE WAY.

SYMBOLS

THE RATING PLATE ON YOUR MACHINE MAY SHOW SYMBOLS. THESE REPRESENT IMPORTANT INFORMATION ABOUT THE PRODUCT OR INSTRUCTIONS ON ITS USE. READ THESE INSTRUCTIONS



IN FULL BEFORE USING THE MACHINE.



WEAR SAFETY FOOTWEAR!



WEAR PROTECTIVE GLOVES!



WEAR EYE PROTECTION!
WEAR HEARING PROTECTION!



KEEP YOUR WORK SPACE
TIDY! UNTIDINESS MAY
RESULT IN ACCIDENTS.



DO NOT REMOVE OR
TAMPER WITH ANY
PROTECTION OR
SAFETY DEVICES.



DISPOSE OF THE USED OIL IN AN
ENVIRONMENT-FRIENDLY WAY.



DO NOT USE IN THE RAIN.



DANGER! KEEP CLEAR OF
MOVING PARTS!



DO NOT REMOVE JAMMED LOGS
WITH YOUR HANDS.



BEFORE STARTING ANY REPAIR
MAINTENANCE OR CLEANING
ALWAYS DISCONNECT THE POWER.



AVOID INJURY FROM THE
MOVEMENT OF THE SPLITTING
BLADE.



KEEP BYSTANDERS AWAY FROM
THE WORKING AREA.

SAFETY

SAFETY WARNINGS & INSTRUCTIONS

• UNDERSTAND YOUR LOG SPLITTER

READ AND UNDERSTAND THE OWNER'S MANUAL AND LABELS AFFIXED TO THE LOG SPLITTER. LEARN ITS APPLICATION AND LIMITATIONS AS WELL AS THE SOURCE, ALCOHOL AND MEDICATION HAZARDS PECULIAR TO IT. DO NOT OPERATE THE LOG SPLITTER WHILE UNDER THE INFLUENCE OF DRUGS, ALCOHOL, OR ANY MEDICATION THAT COULD AFFECT YOUR ABILITY TO USE IT IN DANGEROUS CONDITIONS.

ALWAYS OPERATE YOUR LOG SPLITTER ON DRY, SOLID, LEVEL GROUND. NEVER OPERATE YOUR LOG SPLITTER ON SLIPPERY, WET, MUDDY, OR ICY SURFACES. THE LOCATION YOU CHOOSE SHOULD BE FREE FROM ANY TALL GRASS, BRUSH, OR OTHER INTERFERENCES. THERE SHOULD BE PLENTY OF ROOM FOR HANDLING, AND HELP THE OPERATOR STAY ALERT. KEEP YOUR WORK AREA CLEAN AND WELL LIGHTED. CLUTTERED AREAS INVITES INJURIES. TO AVOID SLIPPING, DO NOT LEAVE TOOLS, LOGS, OR OTHER COMPONENTS LAYING AROUND THE WORK AREA. DO NOT USE THE LOG SPLITTER IN WET OR DAMP AREAS OR EXPOSE IT TO WATER. DO NOT USE IT IN AREAS WHERE FLAMES FROM SPILLING SOLVENTS OR FLAMMABLE LIQUIDS TURNING IT ON. KEEP TOOLS IN PLACE AND IN WORKING ORDER. FORM A HABIT OF CHECKING TO SEE THAT KEYS AND ADJUSTING WRENCHES ARE REMOVED FROM TOOL AREA BEFORE TURNING IT ON. REPLACE DAMAGED, MISSING OR FAILED PARTS BEFORE USING IT. MAKE SURE ALL NUTS, BOLTS, SCREWS, HYDRAULIC FITTINGS, HOSE CLAMPS, ETC. ARE SECURELY TIGHTENED. ALWAYS CHECK THE OIL LEVEL IN THE HYDRAULIC OIL TANK. NEVER OPERATE YOUR LOG SPLITTER WHEN IT IS IN NEED OF REPAIR OR IS IN POOR MECHANICAL CONDITION.



• DRESS PROPERLY

DO NOT WEAR LOOSE CLOTHING, GLOVES, NECKTIES OR JEWELRY (RINGS, WRIST WATCHES). THEY CAN BE CAUGHT IN MOVING PARTS. PROTECTIVE ELECTRICALLY NON-CONDUCTIVE GLOVES AND NON-SKID FOOTWEAR ARE RECOMMENDED WHEN WORKING. WEAR PROTECTIVE HAIR COVERING TO CONTAIN LONG HAIR, PREVENTING IT FROM ANY CONTACT WITH THE LOG. NEVER THROW FOREIGN OBJECTS INTO THE EYES. THIS CAN CAUSE PERMANENT EYE DAMAGE. ALWAYS WEAR SAFETY GOGGLES. EVERYDAY EYEGLASSES HAVE ONLY IMPACT RESISTANT LENSES. THEY ARE NOT SAFELY IMPROPER USE OF EXTENSION CORDS MAY CAUSE INEFFICIENT OPERATION OF THE LOG SPLITTER WHICH CAN RESULT IN OVERHEATING. BE SURE THE EXTENSION CORD IS NO LONGER THAN 10M AND ITS SECTION IS NO LESS THAN 2.5MM² TO ALLOW SUFFICIENT CURRENT FLOW TO THE MOTOR. AVOID USE OF FREE AND INADEQUATELY INSULATED CONNECTIONS. CONNECTIONS MUST BE MADE WITH PROTECTED MATERIALS. THE ELECTRIC CIRCUIT IS. ADEQUATELY PROTECTED AND THAT IT CORRESPONDS WITH THE POWER, VOLTAGE AND FREQUENCY OF THE MOTOR. CHECK THAT THERE IS A GROUND CONNECTION, AND A REGULATION DIFFERENTIAL SWITCH UPSTREAM. GROUND THE LOG SPLITTER. PREVENT BODY CONTACT WITH GROUNDED SURFACES: PIPES, RADIATORS, RANGES, AND REFRIGERATOR ENCLOSURES. NEVER OPEN THE SWITCH / PLUG BOX. SHOULD THIS BE NECESSARY, CONTACT A QUALIFIED ELECTRICIAN. MAKE SURE YOUR FINGERS DO NOT TOUCH THE PLUG'S METAL PRONGS WHEN PLUGGING OR UNPLUGGING THE LOG SPLITTER. AVOID EXCESSIVE BENDING AND TWISTING OF THE CONNECTION BETWEEN THE POWER CORD OF THE BRITISH PLUG AND THE JUNCTION BOX.

• PREVENT FIRES

DO NOT SMOKE OR HAVE OPEN FLAMES WHEN OPERATING OR REFILLING THE LOG SPLITTER. NEVER OPERATE THE LOG SPLITTER NEAR A FLAME OR SPARK. OIL IS FLAMMABLE AND CAN BE EXPLODED.

• KEEP BYSTANDERS AWAY

ALLOW ONLY ONE PERSON TO LOAD AND OPERATE THE LOG SPLITTER. ALWAYS KEEP BYSTANDERS, INCLUDING VISITORS, CHILDREN AND PETS AWAY FROM THE WORK AREA, ESPECIALLY WHEN THE LOG SPLITTER IS UNDER OPERATIONS. ONLY THE OPERATOR SHOULD STAND NEAR THE MACHINE AND ONLY WITHIN THE SAFE OPERATING AREA PRESCRIBED IN THIS MANUAL. NEVER USE ANOTHER PEOPLE TO HELP YOU WITH FREEING JAMMED LOG. NO ONE UNDER THE AGE OF 16 SHOULD BE ALLOWED TO OPERATE THE LOG SPLITTER. ANY PERSON UNDER THE AGE OF 18 SHOULD HAVE THE NECESSARY TRAINING SKILLS TO PERFORM THE OPERATIONS PROPERLY AND SAFELY. ALWAYS MAKE SURE THAT BOTH ENDS OF THE LOG ARE UNDER THE SUPERVISION OF AN ADULT. KEEPING ARE CUT AS SQUARE AS POSSIBLE. THIS WILL PREVENT THE LOG FROM SLIDING OUT OF POSITION WHILE UNDER PRESSURE. BRANCHES MUST BE CUT OF FLUSH WITH THE TRUNK. KEEP PROPER FOOTING AND BALANCE AT ALL TIMES. NEVER STAND ON LOG SPLITTER. SERIOUS INJURY COULD OCCUR IF THE TOOL IS TIPPED OR IF THE CUTTING TOOLS IS UNINTENTIONALLY CONTACTED. DO NOT STORE ANYTHING ABOVE OR NEAR THE LOG SPLITTER WHERE ANYONE MIGHT STAND ON THE TOOL TO REACH THEM.



• AVOID INJURY FROM UNEXPECTED ACCIDENTS • NEVER LEAVE TOOL RUNNING

DO NOT STRADDLE OR REACH ACROSS THE SPLITTING AREA WHEN OPERATING THE LOG SPLITTER. NEVER PILE LOGS TO BE SPLIT IN A MANNER THAT WILL CAUSE YOU TO REACH ACROSS THE LOG SPLITTER. ONLY USE YOUR HANDS TO OPERATE THE CONTROL LEVERS. NEVER USE YOUR FOOT, KNEE, A ROPE, OR ANY OTHER EXTENSION DEVICE. ALWAYS PAY FULL ATTENTION TO THE MOVEMENT OF THE WEDGE RAM. NEVER ATTEMPT TO LOAD YOUR LOG SPLITTER WHILE THE RAM IS IN MOTION. KEEP HANDS OUT OF THE WAY OF ALL MOVING PARTS. NEVER TRY TO SPLIT TWO LOGS AT THE SAME TIME. WHEN IN AUTO MODE, KEEP YOUR HANDS OFF THE MACHINE - THE LOG SPLITTER IS DESIGNED TO AUTOMATICALLY STOP WHEN THE CYLINDER IS FULL RETRACTED. KEEP YOUR HANDS AWAY FROM SPLITS AND CRACKS WHICH OPEN IN THE LOG. THEY MAY CLOSE SUDDENLY AND CRUSH OR AMPUTATE YOUR HANDS. NEVER REMOVE A LOG FROM THE SPLITTER WHILE IT IS DESIGN RATE. DON'T USE LOGS SPLITTER FOR A PURPOSE FOR WHICH IT WAS NOT INTENDED. DO NOT, UNDER ANY CIRCUMSTANCES, ALTER YOUR LOG SPLITTER. THIS EQUIPMENT WAS DESIGNED AND ENGINEERED TO BE USED IN ACCORDANCE WITH THE OPERATING INSTRUCTIONS. ALTERING THE EQUIPMENT, OR USING THE EQUIPMENT IN SUCH A WAY AS TO CIRCUMVENT ITS DESIGN CAPABILITIES AND CAPACITIES, COULD RESULT IN SERIOUS OR FATAL INJURY AND WILL VOID THE WARRANTY. NEVER TRY TO SPLIT LOGS LARGER THAN THOSE INDICATED IN THE SPECIFICATIONS TABLE. THIS COULD BE DANGEROUS AND MAY DAMAGE THE MACHINE.

UNATTENDED
DON'T LEAVE TOOL UNTIL IT HAS COME TO A COMPLETE STOP.

• DISCONNECT POWER

UNPLUG WHEN NOT IN USE, BEFORE MAKING ADJUSTMENTS, CHANGING PARTS, CLEANING, OR WORKING ON THE LOG SPLITTER. CONSULT TECHNICAL MANUAL BEFORE SERVICING.

• MAINTAIN YOUR LOG SPLITTER WITH CARE

ALWAYS CLEAN THE UNIT AFTER EACH USE. KEEP THE LOG SPLITTER CLEAN FOR BEST AND SAFEST PERFORMANCE. FOLLOW INSTRUCTIONS FOR LUBRICATING. INSPECT ALL HYDRAULIC SEALS, HOSES AND COUPLERS FOR LEAKS PRIOR TO USE. CONTROL LEVERS AND POWER SWITCH MUST BE KEPT CLEAN, DRY AND FREE FROM OIL AND GREASE. ALWAYS USE THE COLLECTION POINT OR FOLLOW THE STIPULATIONS IN THE COUNTRY WHERE THE LOG SPLITTER IS USED. DO NOT DISCHARGE INTO DRAINS, SOIL OR WATER.

• MAKE THE WORKSHOP CHILDPROOF

LOCK THE SHOP. STORE THE LOG SPLITTER AWAY FROM CHILDREN AND OTHERS NOT QUALIFIED TO USE IT.



SPECIAL WARNINGS & INSTRUCTIONS

- THE SPLITTING OPERATION OF A MACHINE IS DESIGNED TO BE ACTIVATED BY ONE PERSON. WHILE THERE IS THE POSSIBILITY THAT ADDITIONAL OPERATORS COULD BE WORKING WITH THE MACHINE (E.G. FOR LOADING AND UNLOADING), ONLY ONE OPERATOR SHOULD ACTIVATE SPLITTING OPERATIONS;
- THE MACHINE SHALL NOT BE USED BY CHILDREN;
- DESCRIPTION OF FUNCTIONAL TESTS OF THE MACHINE;
- THE INSTALLATION AND MAINTENANCE REQUIREMENTS INCLUDING A LIST OF THOSE DEVICES E.G. TWO-HAND CONTROL DEVICE WHICH SHOULD BE VERIFIED, HOW FREQUENTLY THE VERIFICATION SHALL BE CARRIED OUT AND BY WHAT METHOD;
- NEVER ATTEMPT TO REMOVE A LOG WHICH HAS GOT STUCK ON THE WEDGE BY HAND. LOWER THE LOG IS COMPLETELY SPLIT;
- IF A LOG BECOMES STUCK ON THE WEDGE AT THE BOTTOM POSITION, PRESS THE HANDLE WITH ONE HAND AND TURN OFF THE MACHINE WITH THE OTHER HAND. SLIGHTLY KNOCK THE LOG BY HAMMER TO FREE IT;
- ONLY QUALIFIED PERSON CAN ASSEMBLE THE MACHINE.

SPECIFICATIONS

MODEL NUMBER		CEDLS07V
MOTOR		(400V 3N~ 50HZ 7.1A) S6 40% 3500W
LOG SIZE	DIA.	8-30 CM
CAPACITY	LENGTH	10~55 CM
MAXIMUM FORCE		8 TON
HYDRAULIC PRESSURE		21.0 MPa
HYDRAULIC OIL CAPAC		4 L
RAM TRAVEL		48.5 CM
SPEED	FORWARD	6.0 CM/SEC
	RETRACT	19.4 CM/SEC
NOISE PRESSURE LEVEL		83.6 DBA UNDER NO LOAD; 89.7 DBA UNDER FULL LOAD
VIBRATION		<2.5 M/S ²
OVERALL SIZES	LENGTH	84.5 CM
	WIDTH	93.5 CM
	HEIGHT	150 CM
WEIGHT		108.8 KG

*S6 40%, continuous operation periodic duty: time of one load cycle is 10 minutes, operation time at constant load is 4 minutes, operation time at no-load is 6 minutes.



APPLICATION CONDITIONS

THIS LOG SPLITTER IS DESIGNED FOR OPERATING UNDER AMBIENT TEMPERATURES BETWEEN $+5^{\circ}\text{C}$ AND 40°C AND FOR INSTALLATION AT ALTITUDES NO MORE THAN 1000M ABOVE M.S.L. THE SURROUNDING HUMIDITY SHOULD BE LESS THAN 50% AT 40°C . IT CAN BE STORED OR TRANSPORTED UNDER AMBIENT TEMPERATURES BETWEEN -25°C AND 55°C .

ELECTRICAL REQUIREMENTS

WITH 3 PHASE 400 VOLT / 50HZ MOTOR, THE LOG SPLITTER SHOULD BE CONNECTED TO STANDARD $400\text{V} \pm 10\%$ / $50\text{HZ} \pm 1\%$.

ELECTRICAL SUPPLY WHICH HAS PROTECTION DEVICES OF UNDER-VOLTAGE, OVER-VOLTAGE, OVER-CURRENTS AS WELL AS A RESIDUAL CURRENT DEVICE

(RCD) WHICH

MAXIMUM RESIDUAL CURRENT RATED AT 0.03A. THE

MAINS CONNECTION AND EXTENSION

CABLE MUST

HAVE 5 WIRES = 3P + PE (3/PE). THE

CONNECTION MUST HAVE MAXIMUM 16

A FUSE.

ELECTRICAL CONNECTION RUBBER CABLES

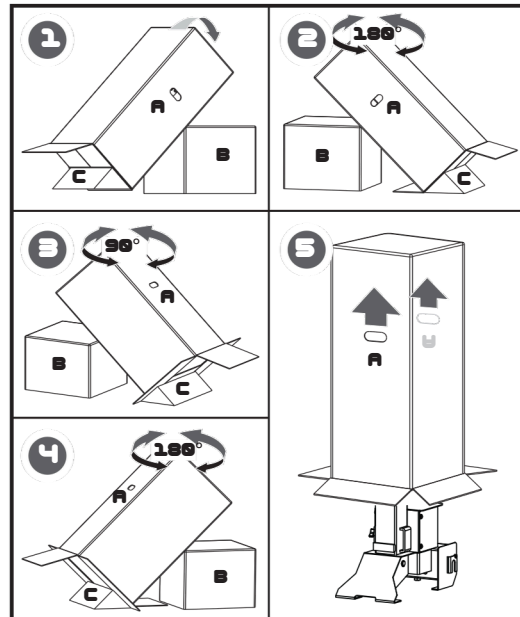
MUST COMPLY WITH EN50245 WHICH ARE ALWAYS

UNPACKING

RECOMMENDED, US

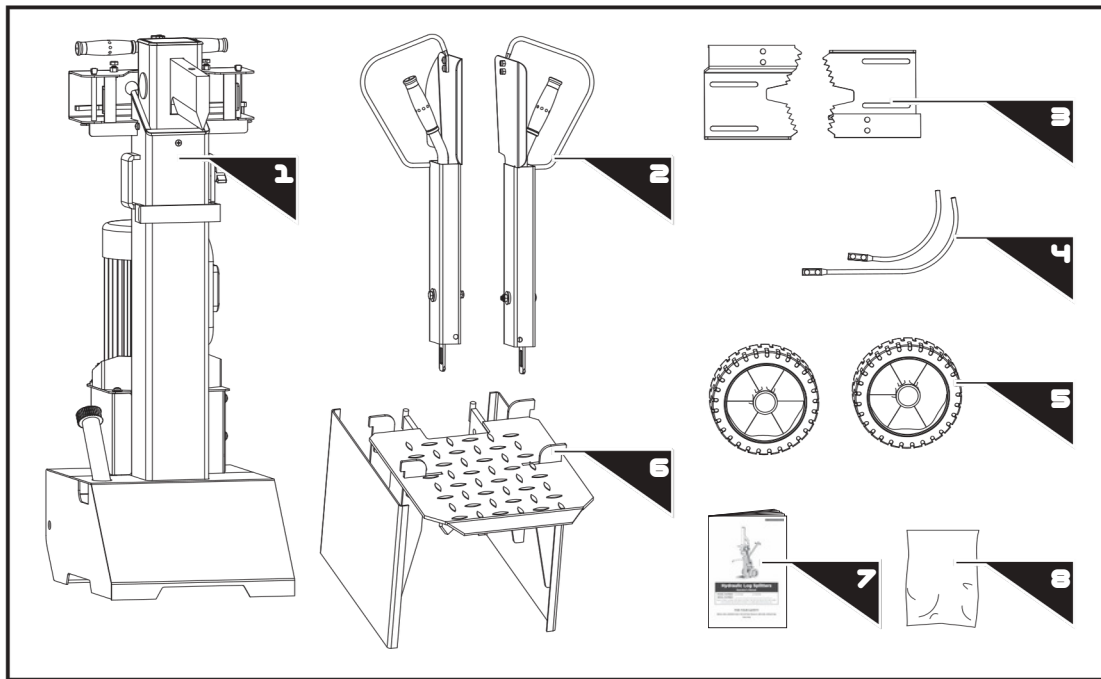
IT IS A LEGAL REQUIREMENT.

AT LEAST 2 PEOPLE REQUIRED TO UNPACK THE LOG SPLITTER PACKAGE. TAKE THE FOLLOWING STEPS TO PUT THE LOG SPLITTER ON THE GROUND BY TIPPING EVERY SIDE OF THE CARTON BY 45 DEGREE. MAKE SURE PUT BLOCK (B) TO SUPPORT THE LOG SPLITTER PACKAGE (A) AT THE POINT A LITTLE HIGHER THAN THE MIDDLE. THE OTHER SIDE OF BLOCK (B) SHALL BE AGAINST STEADY OBJECT, SUCH AS A WALL. WEDGE (C) SHALL BE ARRANGED UNDER THE TIPPED LOG SPLITTER PACKAGE (A) EVERY STEP TO AVOID SLIPPING. THEN REMOVE THE CARTON OFF THE LOG SPLITTER.

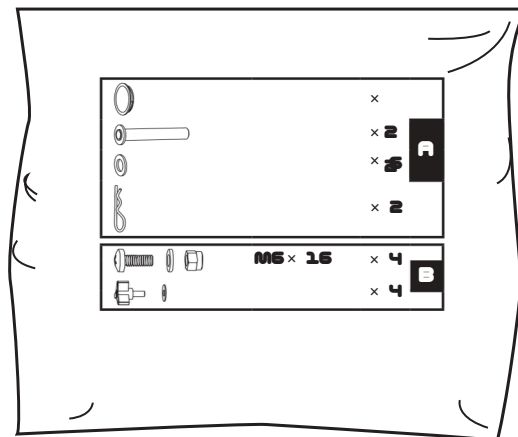




CONTENTS SUPPLIED



- 1. LOG SPLITTER FRAME**
- 2. CONTROL LEVER AND GUARD ASSY (1 BAG/HARDWARE BAG, INCLUDING**
- 3. ADJUSTABLE LOG HOLDER (1 PAIR)**
- 4. RETAINER 1 AND RETAINER 2**
- 5. WHEELS (1 PAIR)**
- 6. SUPPORT TABLE**
- 7. OPERATORS MANUAL**

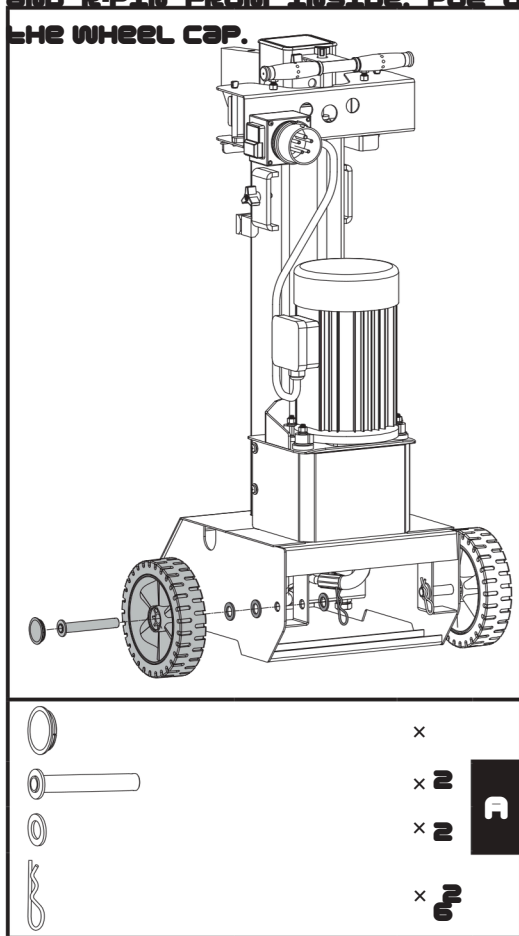




ASSEMBLY

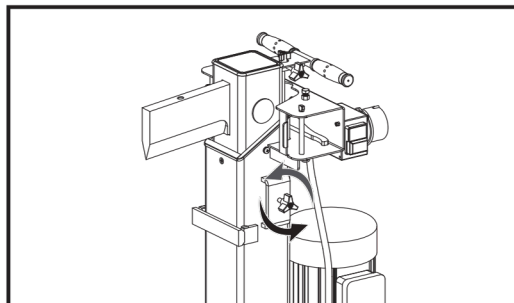
WHEELS

1. PASS THE AXLE THROUGH THE WHEEL FROM OUTSIDE AND PUT ON TWO WASHERS AS SHOWN IN THE FOLLOWING FIGURE. SLIDE THE AXLE INTO THE TWO HOLES ON THE BASE OF LOG SPLITTER AND SECURE IT WITH ANOTHER WASHER AND R-PIN FROM INSIDE. PUT ON THE WHEEL CAP.

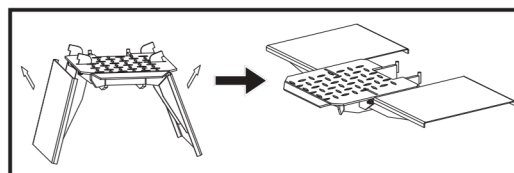


SUPPORT TABLE

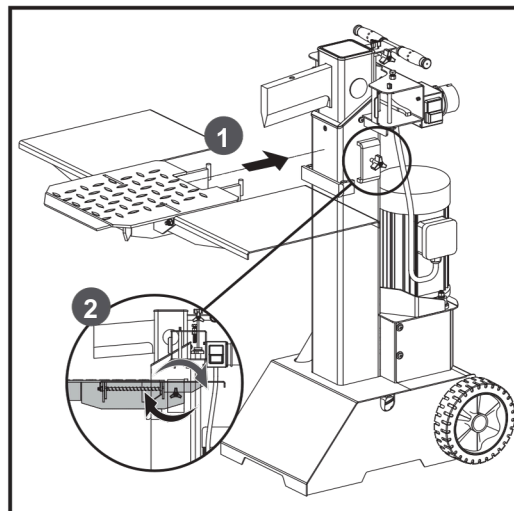
1. BEFORE ASSEMBLY, LOOSEN THE STAR KNOB BY TURNING IT COUNTERCLOCKWISE.



2. UNFOLD THE LOG SUPPORT TABLE, MAKE THE THREE PARTS OF IT AT THE SAME SURFACE LEVEL.



3. INSERT THE HOOKS OF THE LOG SUPPORT TABLE INTO THE MOUNT BRACKETS.

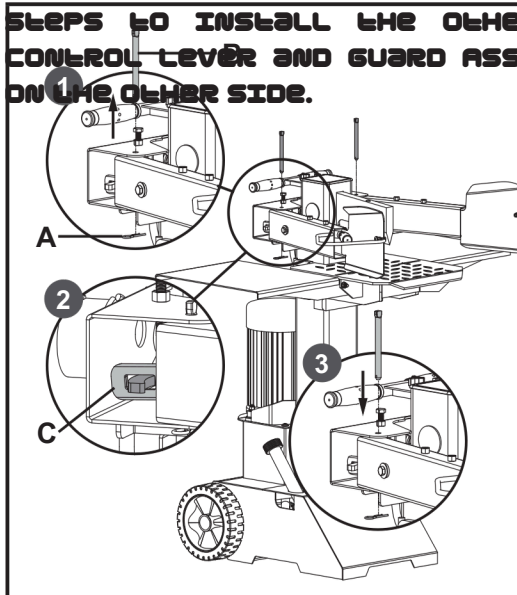


2. REPEAT THE SAME STEPS TO MOUNT & TIGHTEN THE STAR KNOB. WHEEL ON THE OTHER SIDE.



CONTROL LEVER

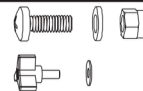
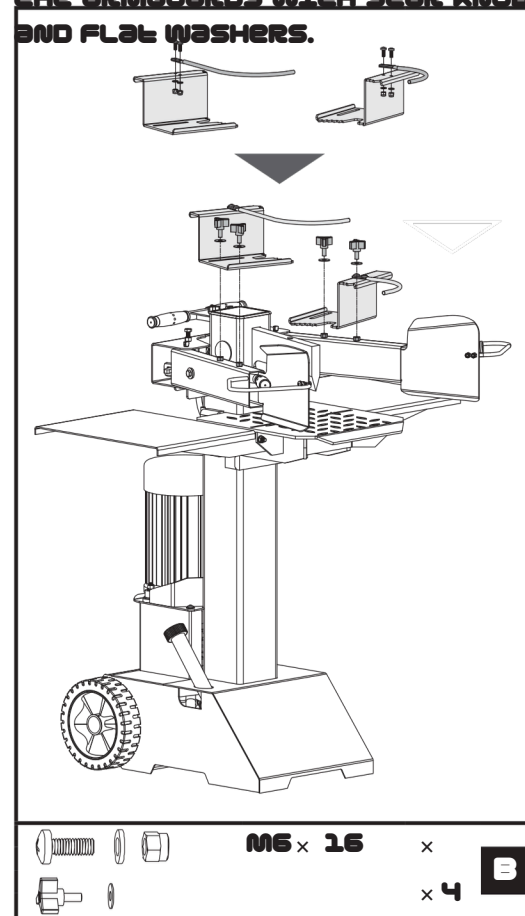
PULL SPRING PIN (A) TO REMOVE THE LOCK PIN (B). APPLY A THIN COAT OF GREASE TO BOTH SURFACES OF THE CONTROL LEVER GUARD AS ILLUSTRATED. INSERT THE CONTROL LEVER AND GUARD ASSY AND MAKE SURE THE CONTROL LEVER END GOES INTO THE SLOT OF CONNECTION BRACKET (C). LOCK THE CONTROL LEVER AND GUARD ASSY. DOWN WITH THE LOCK PIN (B) AND SPRING PIN (A). FOLLOW THE SAME STEPS TO INSTALL THE OTHER CONTROL LEVER AND GUARD ASSY ON THE OTHER SIDE.



CHECK BOTH SIDES AFTER ASSEMBLY. THE CONTROL LEVERS MUST BE PLACED IN THE SLOTS OF CONNECTION BRACKETS.

ADJUSTABLE LOG HOLDER

ALIGN THE HOLES AND ASSEMBLE THE RETAINER 1 AND RETAINER 2 ONTO THE CLAMPS. ENSURE THE DIRECTION OF THE RETAINERS AS SHOWN IN THE FOLLOWING PICTURE. SECURE THE CONNECTION WITH M6X16 BOLTS, WASHERS AND NUTS. SECURE THE LOG CLAMPS ON THE ARM GUARDS WITH STAR KNOBS AND FLAT WASHERS.



M6 x 16

x

x 4

4



KNOW YOUR MACHINE

TRANSPORT HANDLE

SPLIT WEDGE

RAM

LOG HOLDER ADJUSTING

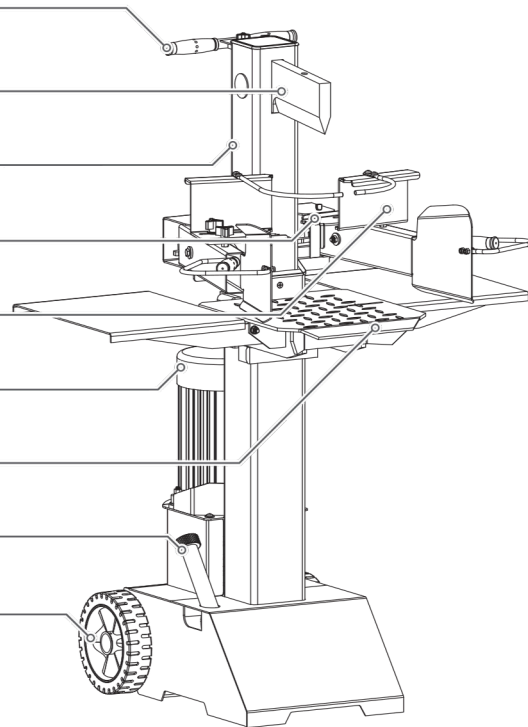
ADJUSTABLE LOG HOLDER

MOTOR

SUPPORT TABLE

OIL TANK COVER / AIR BLEED

WHEELS



RAM TRAVEL ADJUSTING

CONTROL LEV

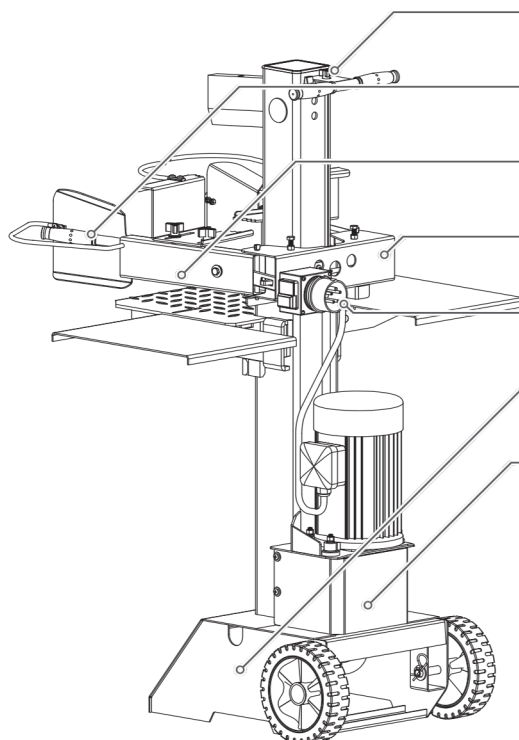
CONTROL LEVER GU

CONTROL LEVERS CONNECTIO

PLUS & SWIT

BASE

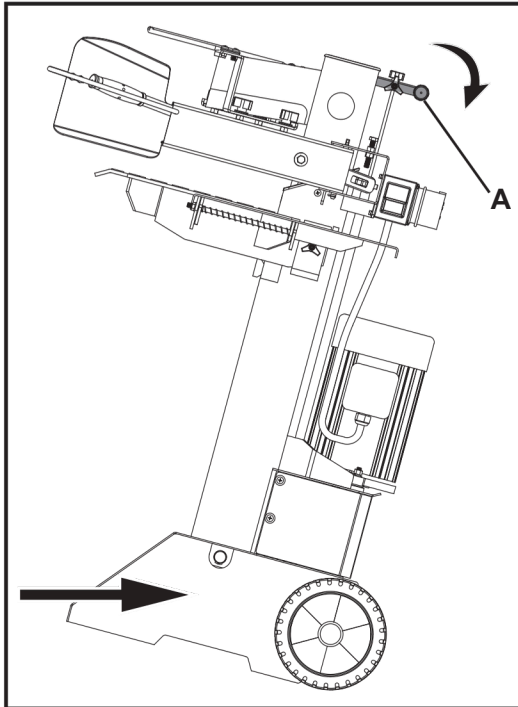
BASE COVE






TRANSPORT

THE LOG SPLITTER IS EQUIPPED WITH 2 WHEELS FOR MINOR MOVING. TO MOVE THE LOG SPLITTER TO THE WORK SITE. GRIP THE HANDLE (A) TO TILT THE LOG SPLITTER SLIGHTLY AFTER MAKING SURE THE OIL TANK COVER IS TIGHTENED.

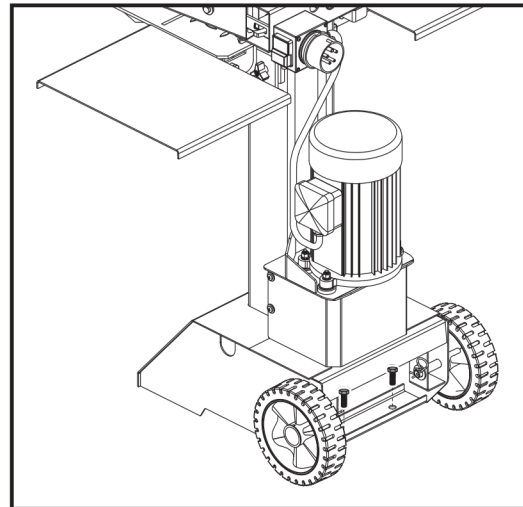


 IF USING A CRANE, LAY HOIST SLING AT THE LIFTING POINT (A).

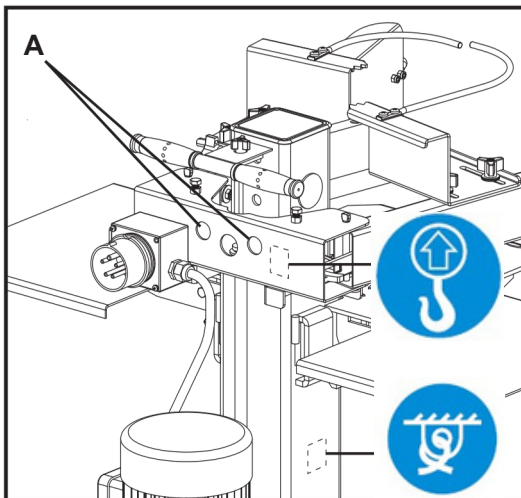
 FOR LONG DISTANCE TRANSPORT, FASTEN THE LOG SPLITTER AT THE POSITION WITH BUNDLING SIGN AFTER LIFTING IT INTO THE TRUCK, TO AVOID FREE MOVEMENT DURING

SPLITTER OPERATION


BEFORE OPERATION, FIX THE MACHINE USING BOLTS M10X30 ON LEVER GROUND.

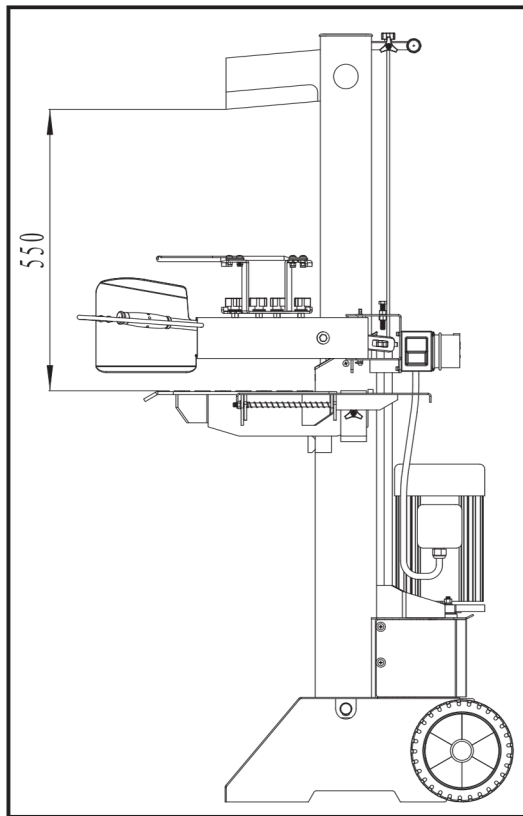


DELIVERING LOG SPLITTER TO WORK SITE

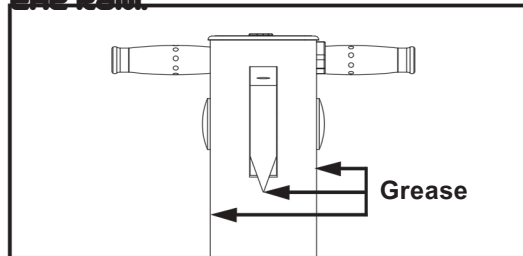


1. PLAN YOUR WORK SITE. WORK SAFELY AND SAVE EFFORT BY PLANNING YOUR WORK BEFORE HAND. HAVE YOUR LOGS POSITIONED WHERE THEY CAN BE EASILY REACHED. HAVE A SITE LOCATED TO STACK THE SPLIT WOOD OR LOAD IT ONTO A NEARBY TRUCK OR OTHER CARRIER.
2. PREPARE THE LOGS FOR SPLITTING. THIS SPLITTER ACCOMMODATES LOGS UP TO 105CM IN LENGTH. WHEN CUTTING UP LIMBS AND LARGE SECTIONS, DO NOT CUT SECTIONS ANY LONGER THAN 105CM.

 DO NOT ATTEMPT TO SPLIT GREEN LOGS. DRY, SEASONED LOGS SPLIT MUCH MORE EASILY, AND WILL NOT JAM AS FREQUENTLY AS GREEN WOOD.



3. TO APPLY A THIN COAT OF GREASE TO THE SURFACES OF THE RAM BEFORE OPERATION WILL LENGTHEN THE DURABILITY OF THE RAM.



4. ROUTE THE POWER CORD. ROUTE THE CORD FROM THE POWER SOURCE TO THE SPLITTER IN A WAY THAT SAFEGUARDS AGAINST TRIPPING ON THE CORD, OR THE CORD BECOMING DAMAGED DURING THE WORK SESSION. PROTECT THE POWER CORD FROM IMPACTS, PULLING OR CORROSIVE MATERIALS.

5. OPEN THE AIR BLEED. LOOSEN THE OIL TANK COVER A FEW TURNS WHENEVER THE SPLITTER BEING USED. RETIGHTEN THIS COVER WHEN YOU FINISHED.

7. WHILE OPERATING UNDER EXTREMELY LOW TEMPERATURE, KEEP THE LOG SPLITTER RUNNING UNDER NO LOAD FOR 15 MINUTES TO PREHEAT THE HYDRAULIC OIL. BEFORE INITIAL OPERATION, CHECK TO BE SURE THE TWO-HANDED OPERATION IS PROPERLY FUNCTIONING BY FOLLOWING STEPS:

- (1) LOWER BOTH CONTROLS, SPLITTER LOWERS TO APPROX 5CM ABOVE THE GROUND ABOVE THE HIGHEST TABLE POSITION. RELEASE EITHER OF THE LEVERS, SPLITTING WEDGE SHOULD REMAINS IN THE ORIGINAL POSITION.**

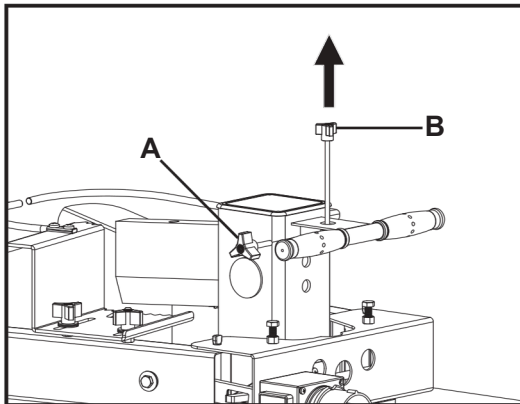
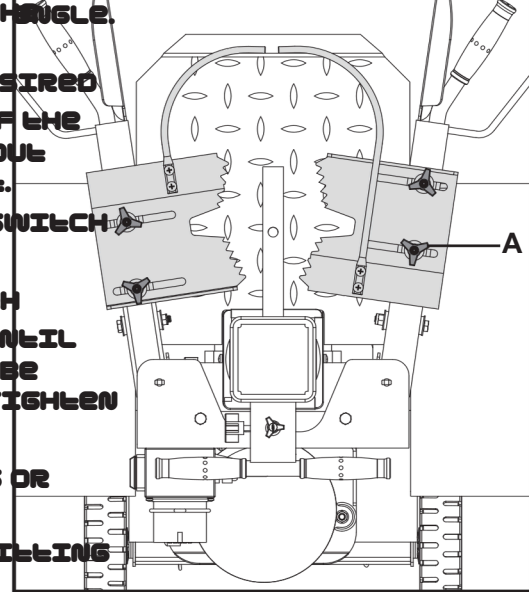


(3) RELEASE BOTH LEVERS, THE RAM SHOULD RISE TO THE HIGHEST POSITION AUTOMATICALLY.

9. TO SET WEDGE RAM STROKE, TAKE THE FOLLOWING STEPS:

- (1) MOVE SPLITTING WEDGE TO DESIRED POSITION. THE UPPER POSITION OF THE RAM WEDGE TRAVEL SHOULD BE ABOUT 3-5CM OVER THE LOGS TO BE SPLIT.
- (2) RELEASE A CONTROL LEVER OR SWITCH OFF MOTOR.
- (3) RELEASE THE SETSCREW (A) WITH L KEY. RAISE ADJUSTING ROD (B) UNTIL ADJUSTING ROD (B) IS STOPPED TO BE STOPPED BY THE SPRING INSIDE. TIGHTEN THE SETSCREW (A).
- (4) RELEASE BOTH CONTROL LEVERS OR SWITCH ON MOTOR.
- (5) CHECK UPPER POSITION OF SPLITTING WEDGE.

11. ADJUST THE LOG HOLDERS (A) ACCORDING TO THE DIAMETER OF THE LOG TO OBTAIN MOST COMFORTABLE CONTROL LEVERS

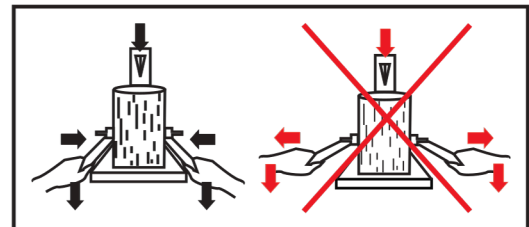


10. PLACE LOG ONTO SPLITTER. PLACE THE LOG ONTO THE SUPPORT TABLE VERTICALLY AND SITTING FLAT ON THE SUPPORT TABLE. BE SURE THE WEDGE AND SUPPORT TABLE WILL CONTACT THE LOG SQUARELY ON THE ENDS. NEVER ATTEMPT TO SPLIT A LOG AT AN ANGLE.



BREAK LOG IN THE DIRECTION OF ITS GROWING GRAIN. DO NOT PLACE LOG ACROSS THE LOG SPLITTER FOR SPLITTING. IT MAY BE DANGEROUS AND MAY SERIOUSLY DAMAGE THE MACHINE.

12. HOLD THE LOG WITH CLAMPING BRACKETS CLOSELY IN THE CONTROL LEVER GUARDS. LOWER LEVERS TO START THE SPLITTING. RELEASING EITHER LEVER STOPS THE MOTION OF THE SPLITTING WEDGE. RELEASING BOTH HANDLES TO RETURN THE SPLITTING WEDGE TO THE UPPER POSITION.



13 STACK AS YOU WORK. THIS WILL PROVIDE A SAFER WORK AREA, BY KEEPING IT UNCLUTTERED, AND AVOID THE DANGER OF TRIPPING, OR DAMAGING THE POWER CORD.



ACCUMULATED SPLIT WOOD AND WOOD CHIPS CAN CREATE A HAZARDOUS WORK ENVIRONMENT. NEVER CONTINUE TO WORK IN A CLUTTERED WORK AREA WHICH MAY CAUSE YOU TO SLIP, TRIP OR FALL.

REPLACING HYDRAULIC OIL

THE HYDRAULIC SYSTEM IS A CLOSED SYSTEM WITH OIL TANK, OIL PUMP AND CONTROL VALVE. CHECK OIL LEVEL REGULARLY WITH DITCHER. LOW OIL LEVELS CAN DAMAGE THE OIL PUMP. OIL LEVEL SHOULD MEASURE APPROX. 1-2 CM LOWER THAN THE UPPER SURFACE OF THE OIL TANK.

THE OIL SHOULD BE COMPLETELY CHANGED ONCE A YEAR.

- MAKE SURE MOVING PARTS STOPS AND THE LOG SPLITTER IS UNPLUGGED.
- MAKE SURE THAT NO DIRT OR DEBRIS FINDS ITS WAY INTO THE OIL TANK
- COLLECT USED OIL AND RESPONSIBLY RECYCLE.
- FOLLOWING AN OIL CHANGE, ACTIVATE THE LOG SPLITTER A FEW TIMES WITHOUT ACTUALLY SPLITTING

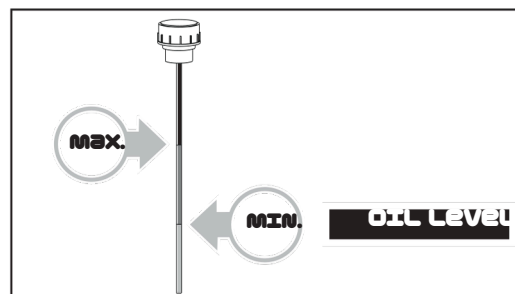
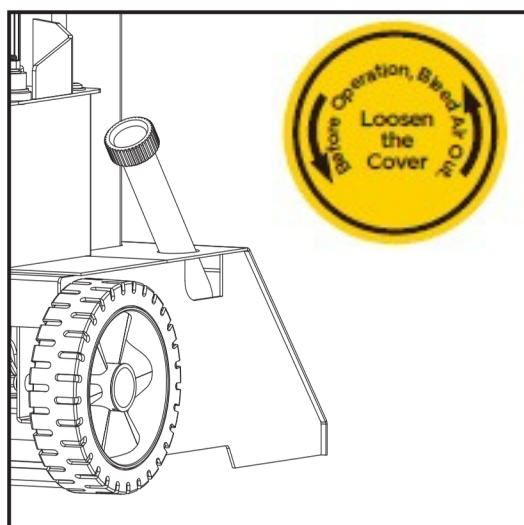
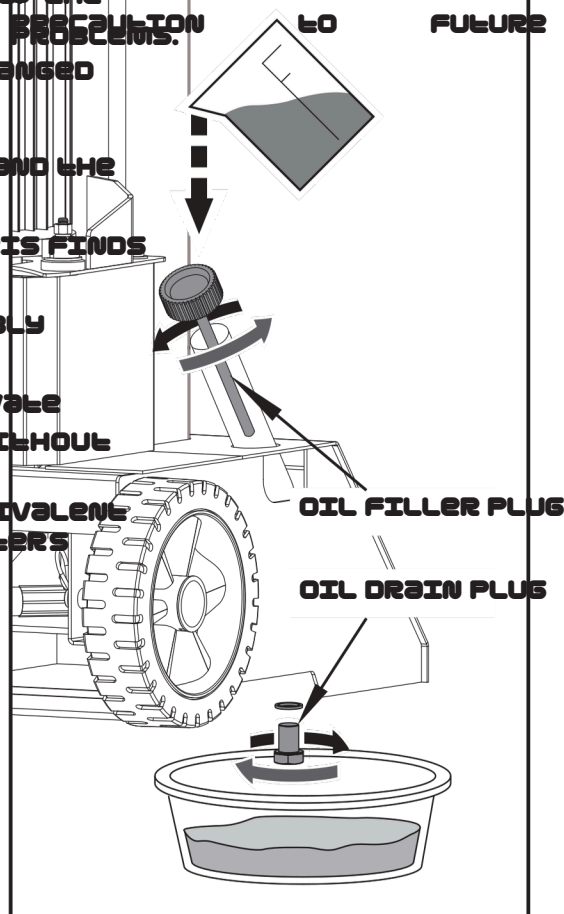
FOLLOWING HYDRAULIC OILS OR EQUIVALENT ARE RECOMMEND FOR THE LOG SPLITTERS HYDRAULIC TRANSMISSION SYSTEM:

SHELL TELLUS 22
MOBIL DTE 11
ARAL VITAM GF 22
BP ENERGOL HLP-HM 22

USE A DRAIN PAN TO AID IN THE REMOVAL OF ALL USED OIL AND PARTICLES.

REMOVE OIL DRAIN PLUG TO

DRAIN OIL FROM TRANSMISSION. EXAMINE OIL FOR METAL CHIPS AS INDICATION TO FUTURE PROBLEMS.





READ DIPSTICK TO DETERMINE THE MAXIMUM AND MINIMUM OF THE OIL LEVEL. LOW OIL CAN DAMAGE THE OIL PUMP. OVERFILLING CAN RESULT IN EXCESSIVE TEMPERATURE IN THE HYDRAULIC TRANSMISSION SYSTEM.

SHARPENING WEDGE

THIS LOG SPLITTER IS EQUIPPED WITH REINFORCED SPLITTING WEDGE WHICH BLADE IS SPECIALLY TREATED, AFTER LONG PERIOD OF OPERATION, AND WHEN REQUIRED; SHARPEN THE WEDGE USING A FINE-TOOTHED FILE REMOVING ANY BURRS OR FLAT SPOTS ON THE EDGE.

TROUBLE SHOOTING

PROBLEM	PROBABLE CAUSE	REMEDY SUGGESTED
MOTOR DOES NOT START	NO CURRENT IN THE SOCKET ELECTRICAL EXTENSION LINE	CHECK MAINS FUSE
	DEFECTIVE INCORRECT CONNECTION LINE	UNPLUG, CHECK AND REPLACE.
	3~400V SWITCH DEFECTIVE INCORRECT CONNECTION	5-LINE CONNECTION at 1.5MM DIAMETER
		HAVE CHECKED BY ELECTRICIAN
INCORRECT MOTOR ROTATION DIRECTION		CHANGE POLE SWITCHING DEVICE IN THE PLUG WITH A SCREW DRIVER
		REVERSE POLARITY BY ELECTRICIAN
LOG SPLITTER DOES NOT WORK WHILE MOTOR RUNNING	VALVE IS NOT OPENED OWING TO THE CONNECTION PARTS LOOSENING	CHECK AND TIGHTEN THE PARTS.
	CONTROL LEVERS OR CONNECTION PARTS BENT	REPAIR THE BENT PARTS
	LOWER HYDRAULIC OIL LEVEL	CHECK AND REFILL HYDRAULIC OIL.
LOG SPLITTER WORKS WITH ABNORMAL VIBRATION AND NOISE	LOWER HYDRAULIC OIL LEVEL	CHECK AND REFILL HYDRAULIC OIL.

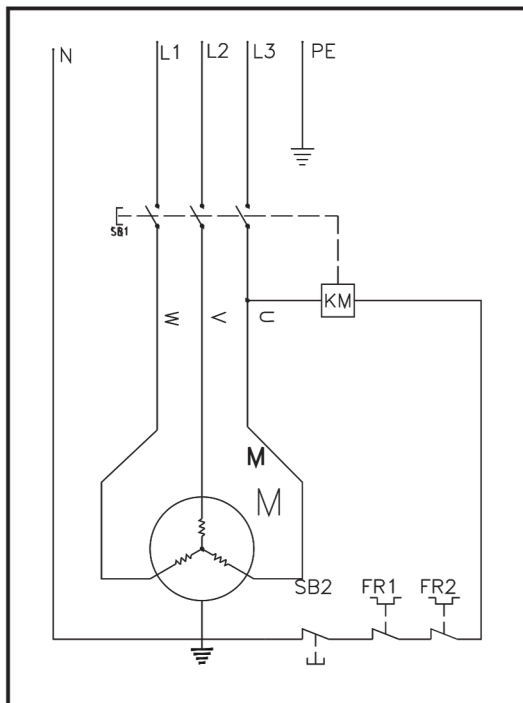


ATTENTION: ALL REPAIR WORK MUST BE DONE BY A SPECIALIST FOR THIS PRODUCT.

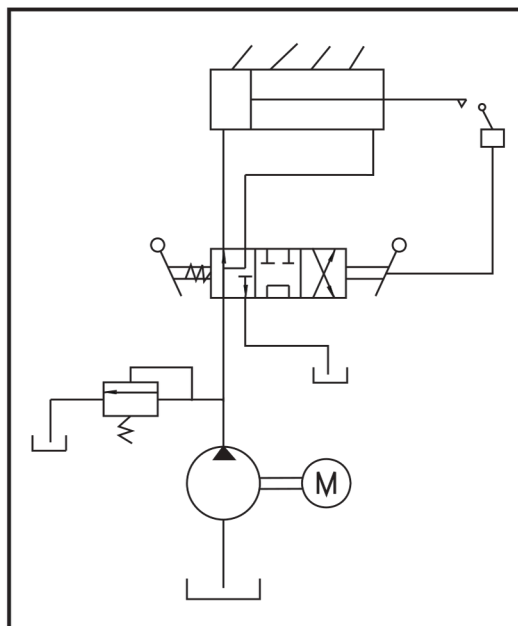


WIRING DIAGRAM

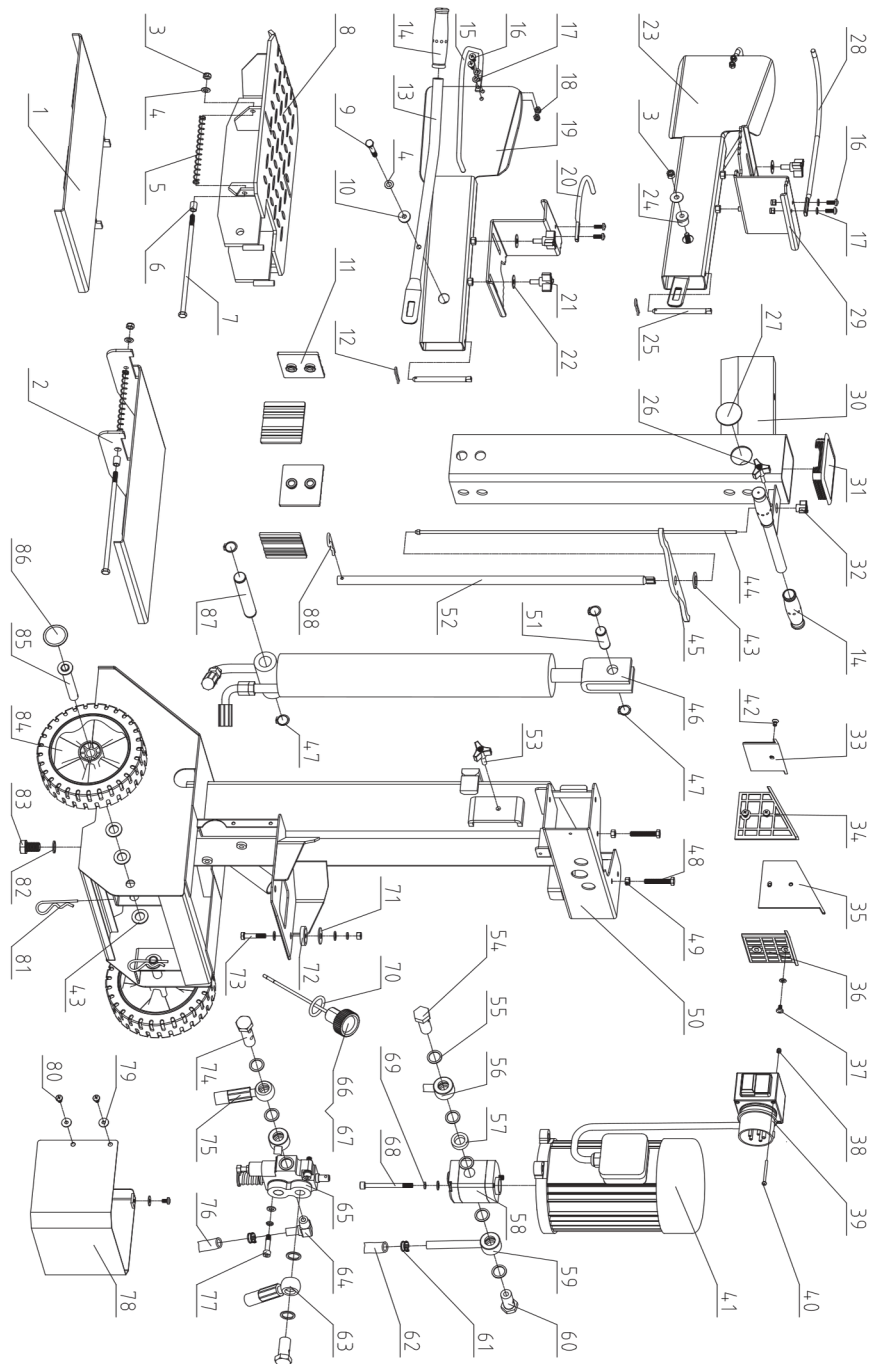
FOR MODEL #65886:



HYDRAULIC SYSTEM DIAGRAM



PARTS SCHEMATIC



65886



PARTS LIST

NO.	DESCRIPTION	QTY
1	SIDE LOG SUPPORT 2	1
2	SIDE LOG SUPPORT 1	1
3	LOCKNUT M8	4
4	WASHER 8	8
5	SPRING	2
6	BUSH	2
7	BOLT 8.8 M8X210	2
8	LOG SUPPORT C1	1
9	BOLT 8.8 M8X60	2
10	BUSH 2	2
11	LINING PLATE	4
12	CLIP 2.5	2
13	HANDLE C1	2
14	HANDGRIP	4
15	GUARD RING C1	2
16	SCREW M6X16	8
17	WASHER 6	6
18	LOCKNUT M6	8
19	RIGHT ARM GUARD C1	1
20	RETAINER 1	1
21	STAR KNOB	4
22	BIG WASHER 8	11
23	LEFT ARM GUARD C1	1
26	BUSH 1	2
29	PIN C1	2
	CLAMP KNOB M6	1
	CAP	2
	RETAINER 2	1
		2
30	SPLITTING PIPE	1
31	65 SQUARE CAP	1
32	STAR KNOB	1
33	M5(BLACK) UPPER	1
34	LINING PLATE 2-C	1
35	UPPER LINING	1
36	PLATE 4 UPPER	1

LINING PLATE 3
UPPER LINING
PLATE 1

NO.	DESCRIPTION	QTY
37	SCREW M6X8	1
38	LOCKNUT M4	2
39	SWITCH	1
40	SCREW M4X60	2
41	MOTOR	1
42	SCREW M6X10	1
43	WASHER 16	7
	PULL ROD 65	1
	LEVER 85	1
	CYLINDER C1	1
	CIRCLIP 722	4
	BOLT M6X50	2
	NUT M8X9	5
	MAIN FRAME C1	1
	SHORT SHAFT D	1
	TUBE C52	1
	STAR KNOB (BLACK)	1
	OIL PLUG A1	1
55	WASHER GROUPWARE 20	10
56	OIL HOSE C1	1
57	COLLAR	1
	GEAR PUMP C1	1
	NOZZLE C1	1
	OIL PLUG A2	2
	HOSE CLAMP 18-23(24)	4
	OIL HOSE 13	1
	OIL HOSE C1	1
	NOZZLE A	1
	CCSV ALVE	1
	OIL CAP K	1
67	OIL DIPSTICK K6	1
68	SCREW M8X90	2
69	SPRING WASHER 8	7
70	O-RING 25X2.65	1
71	BIG WASHER 10	3
72	MOTOR SUPPORT	3



NO.	DESCRIPTION	Qty
73	BOLT 8.8 M8X45	3
74	OIL PLUG A6	1
75	OIL HOSE C1	1
76	OIL HOSE 13	1
77	SCREW M8X35	2
78	SHIELD C1	1
79	BIG WASHER 6	3
80	SCREW M6X10	5

NO.	DESCRIPTION	Qty
81	CLIP 3	2
82	WASHER GROUPWARE 16	1
83	BOLT M16X25	1
84	WHEEL	2
85	WHEEL AXLE C1	2
86	WHEEL CAP	2
8	LONG SHAFT A4	1
7	CLIP 4	1

8

8